

Coombe Abbey Woodturners NEWSLETTER

November



2023

This Month's Sponsor



DATA PROTECTION

Your personal details are held on a computer belonging to an officer of the Coombe Abbey Woodturners. Your details are purely for the use of the Club, and are not passed to any third party. If you object to your name, address and telephone number being held on a computer belonging to an officer of the Club, then please write to any member of the committee.

HEALTH & SAFETY NOTICE

Woodturning can be dangerous! Always follow the manufacturers' instructions and safety advice when operating power tools. Never try the techniques shown at our demonstrations or in our Newsletter if you are unsure or the procedure does not feel safe. Always use the guarding and other safety equipment.

The Club takes reasonable care to operate and instruct in a safe manner and strongly recommends all members to follow the Club's Health and Safety rules and the guidance notes that the AWGB issue in their Revolutions magazine from time to time.

Committee Members and Contacts

Chairman	Graham Ball
Vice Chairman	Giles Headley
Treasurer & Membership Secretary	Lee Cartwright
Secretary	Rod Young
Events Secretary	Eric Taylor
Newsletter/Web Site Editor	Rob Sheehan
	Graham Cashmore
	Peter Orange
	Pat Hanley
Training Coordinator	Michael Archer
Library Custodian	Gary Jones

Website: <https://www.coombeabbeywoodturners.org>

**Copy Deadline for the December issue of the Newsletter is:-
Thursday 23rd November 2023**

**Please forward your News, Stories and Photographs to:-
Robert Sheehan- Newsletter Editor -
M: 07905 185122. E-mail: robsheehan@virginmedia.com**

© Copyright Coombe Abbey Woodturning Club 2023

The content of this newsletter must not be copied or reproduced without the written permission of the newsletter editor.

In This Issue

Chairman's Jottings	4
One Line Philosopher	5
This Month's Sponsor	6
Paul Fryer Demo	8
Roy Nicholls Obituary	18
Notices	20
Activities at other clubs	22
Equipment For Sale/Wanted	24
Members' Work	28
Calendar Of Events	32

Advertisers

Turners Retreat	7
Charnwood	9
Crown Hand Tools	11
Henry Taylor	13
Axminster Tools	15
Chestnut Products	17
Hamlet	19
Yandles	21
CSM Abrasives Plus	23
Record Power	25
Proops Brothers	27
TMS Volvo	29

From the Editor



Inside you will find my report from the Shilton evening demonstration by club member Paul Fryer. As well as turning, Paul managed to do some hollowing, demonstrated a "samdy" finish, do some power carving, do some air brush colouring and some dry brushing. And that was just on his first piece.

Unfortunately, we lost former founding member Roy Nichols on 9th October. His obituary and funeral details are on page 18.

The Christmas competitions can be found on page 20. As well as the usual trophies, there is a new one, the "John Bradbury Memorial Trophy", to be won.

There is no demonstration in November but the workshop will be open as usual.

Our next meeting is the Christmas Party on Saturday December 9th. For £15, you will get a full Christmas meal with all the trimmings. Let Lee know asap if you want to attend.

Rob

Chairman's Jottings

We were all treated to a very good demonstration at Shilton Village Hall on Friday 20th October 2023 by our very own club member Paul Fryer. You will be able to read this in more details in Rob Sheehan's report in this issue of the Newsletter.



I do so enjoy meeting and chatting to members during our beverage break and it was good to be able to make the acquaintance of two new members.

It was announced at the meeting at Shilton that the club has been invited to have a stand at Warwick Racecourse meeting on 13th January 2024. Yes I know it could be cold in that month but the races are attended by an enormous amount of people who are potential buyers of turned work, so the committee has provisionally accepted the invitation. We therefore require help from our members to support the club at this event so please let me have your name so that a free pass can be issued to you. Anyone arriving without a pass will be charged entry to the event. You will be furnished with fuller details as they are known including whether the marquee will be heated.

I will repeat what I said about the Christmas party in last months newsletter:-

We are now taking names for the Christmas Party which takes place on Saturday 9th December at Walsgrave Baptist Church 12 O'Clock for 12:30 start. This year Jill Steedman and helpers are putting on a hot meal of Turkey and all the trimmings for us. This will be a grand spread and obviously will cost more per individual than the buffet meals we have had previously but at £15 per head, I am sure you will agree is very good value for money. The day will also include the annual competitions which are listed in these pages of the newsletter so please make sure you enter a piece and you could win one of the trophies.

At this event we will also be presenting the Air Ambulance with a cheque being the total sum raised for this charity over the past twelve

months. Over the years we have raised enough money to fund many lifesaving missions which should make all of us in the club very proud. Names for the party please to Lee Cartwright or me and I will pass on your name to Lee. Payment will be required at the door on the day of the Party.

After the Christmas Party, there are no more meetings until the AGM on 6th January at Walsgrave Baptist Church starting at 10am. Please try to attend this important meeting as we need you to elect the committee for the next twelve months among other important decisions which have to be made.

All the 2024 meeting dates are shown on the back cover of this newsletter and we have some exceptional demonstrators lined up for your entertainment so please put these dates in your diary or mark your calendar so that you don't miss any.

All for now, and I hope to see you all soon.

Keep those bevels rubbing

Regards

Graham

One Line Philosopher:

“A thing of beauty is a joy forever.”

John Keats

This Month's Newsletter Sponsor.

Turners Retreat

.As an occasional visitor to their shop in Howarth, I can testify to the wide range of quality tools, machinery, accessories, project kits and timber that is available. They also run courses if you are short of Christmas present ideas!

Editor

Turners Retreat(A Company Profile)

At Turners Retreat, we proudly support woodturners and craftspeople. We provide a diverse product range, along with reliable advice and excellent service, to build long-lasting relationships with our customers.

Based in Harworth, near Doncaster, we stock a wide variety of state-of-the-art lathes and machinery manufactured by well-known brand names, such as NOVA, JET and Record Power. We also have an extensive range of tools made by wood working manufacturing specialists, Robert Sorby, that are available to buy in-store and on our website.

We're extremely proud of our timber room too! It has everything from beech to mahogany, wild mango to yellow boxwood and pink ivory to purpleheart. We have wood species suitable for every type of project.

Not forgetting, our huge range of pen kits, blanks and project kits which will keep you busy for hours on end! They're perfect for making handcrafted gifts or items to sell at craft fairs.

Turners Retreat, Unit 2 Faraday Close, Harworth, Doncaster,
Nottinghamshire, DN11 8RU

Tel: 01302 744344

Email: eshop@turners-retreat.co.uk

For more information visit <https://www.turners-retreat.co.uk/>

Supporting makers and small businesses

Join our Community Showcase and have your work featured on our website and social media pages; no fees apply.

- We share a monthly theme
- You submit a relevant piece of work
- Send us links to your online shop and socials
- We'll post it all on our website for free!

Increase your online presence and potentially boost sales!

Turners Retreat
THE WOODWORKERS SOURCE

www.turners-retreat.co.uk

Works submitted must be your own and must be made using at least one product purchased from Turners Retreat.



Scan me!



Let's help each other grow!

Paul Fryer Demonstration 20/10/2023

by Rob Sheehan

Paul started with an 8" long by 4" diameter log of Apple mounted on a faceplate ring. He had already drilled the



centre with a 13mm Morse taper drill bit. This fits directly into



the tail stock taper without having to use a Jacobs chuck. Using a fingernail pro-

file bowl gouge, Paul turned it to round. He then marked the position of the faceplate screws to ensure he didn't accidentally start cutting into them when shaping the vase.

When all of the bark had been removed, Paul shaped the outside to a gentle curve starting at the top and getting narrower to the base. He also roughed out the shape of the foot.



Hollowing



After flattening the top, Paul started hollowing the inside using a Wood-cut hollowing tool from Axminster (current price £320) with the lathe running at approx 500 rpm. As with most hollowing tools, Paul could change from an aggressive cut to a more gentle cut by rotating the angle

of the cutter when presented to the wood. He hollowed about halfway down the vase then stopped saying that he had shown the hollowing method and didn't need to do any more for the demo.



charnwood

Established 1977

Woodworking machinery at its best!

e-mail: sales@charnwood.net

Tel: 01530 516926

www.charnwood.net

We carry an extensive range of Pen Sets, simply match with your favourite blank to create the Perfect Pen

This industrial looking **Warrior Click pen** will impress anyone. The O Rings compliment the look, whilst providing a comfortable writing experience



WC1

Gold

WC2

Gun Metal

WC3

Chrome

This **Hexagonal Click pen** has a rugged design, ready for any tough use.

HC1
Gun Metal



HC2
Chrome



This **Elegant Beauty Twist** is a very stylish pen. Perfect for adding a touch of sophistication



EB1

Gold & Gun Metal

EB2

Antique Bronze

EB3

Rose Copper

A classic antique style pen, the **Spiritual Twist pen** takes you back in time.

ST1
Rose Copper & Gun Metal



ST2
Antique Bronze



Kits are supplied complete, spare parts are also sold separately



Showroom Address: Unit A Cedar Ct, Walker Rd, Bardonia Hill, LE67 1TU

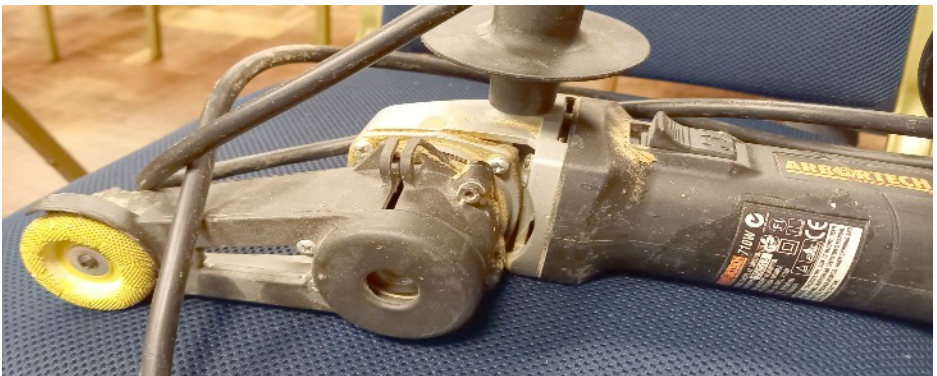
Paul Fryer Demo - continued

Texturing With Sand

Paul then sanded the inside before painting it black with Chestnut Ebonising Lacquer. When the lacquer had dried, Paul poured (too much) PVA glue inside the vase and covered it with black volcanic sand (£10 for 2kg from Amazon. Red sand is also available). This left a rough textured surface.



Power Carving



Back to the outside, Paul finalised the shape and sanded it. He then textured the outside using a Saburr Tooth carbide burr (£51.60 from Axminster) fitted in an Arbortech angle grinder (approx £220 for latest model). Paul said this was a very aggressive machine so he carefully set the tool rest to support the machine as it cut. It must cut on centre height. He also did a few test passes with the machine unplugged before switching on the power. After carving a series

INTRODUCING THE NEW REVOLUTION

The "revolution" is a completely new hollowing system from the world leaders in fine turning tools. From its beautifully weighted handle to its cryogenically treated cutting tips the "revolution" is designed to be the finest hollowing tool on the market.

The modular articulated design allows the woodturner the freedom and flexibility to configure the tool for any situation. From straight vases to heavily undercut hollow forms the "revolution" has it covered.

At the heart of the "revolution" is the new fully depth adjustable "super ring" the revolutionary design of the "super ring" ensures clean efficient wood removal at all times with 5 different cutting tips and modular articulation design the revolution is a must have tool for all woodturners.



- Supplied with 5 different cutting tips for unrivalled flexibility.
- Clever modular design allows for many different configurations.
- All collars and collars beautifully machined from solid "marine grade" brass billet.
- High performance cryogenically treated cutting tips for vastly improved wear resistance.
- New adjustable "Super ring" allows ultra efficient wood removal without clogging.
- Slim-line articulated tip design for unrestricted access to those hard to reach cuts.
- Expandable.
- Hand made in Sheffield, England.



Tel. 0114 261 2300
Fax. 0114 261 2305
Web. www.crownhandtools.ltd.uk
Email. info@crownhandtools.ltd.uk

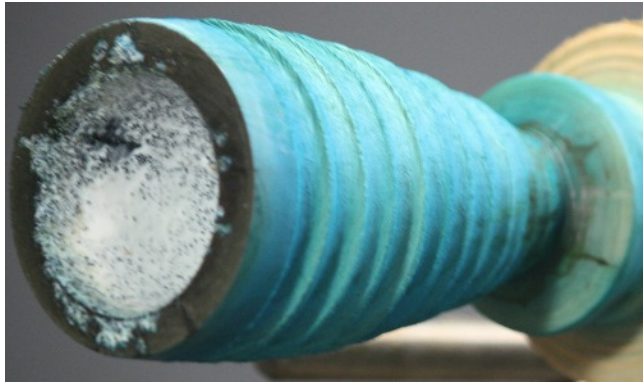


Paul Fryer Demo - continued

of deep coves from bottom to top, Paul used a nylon brush in a drill, to sand the rough surface.

Airbrushing

Using a mini compressor (£45) and dual action bottom feed airbrush, Paul painted the outside a Light Blue using Chestnut spirit stain. Switching to a Royal Blue, he just painted the top and bottom, feathering the edge to create a colour gradient where the colours merged. By starting with light colours, Paul said he didn't have to clean out the airbrush between colours.



Dry Brushing

Using Chestnut copper gilt cream, Paul loaded a paint brush and then wiped most off onto a cloth. He then just caught the tops of the texture, from top to bottom. He then switched to Hampshire Sheen purple embellishing wax and repeated the process. Paul had tried a combination of Red, Purple and Gold but it didn't look right. Once dry, Paul said you could finish with lacquer or wax. The wax did appear to pull off some of the colour.

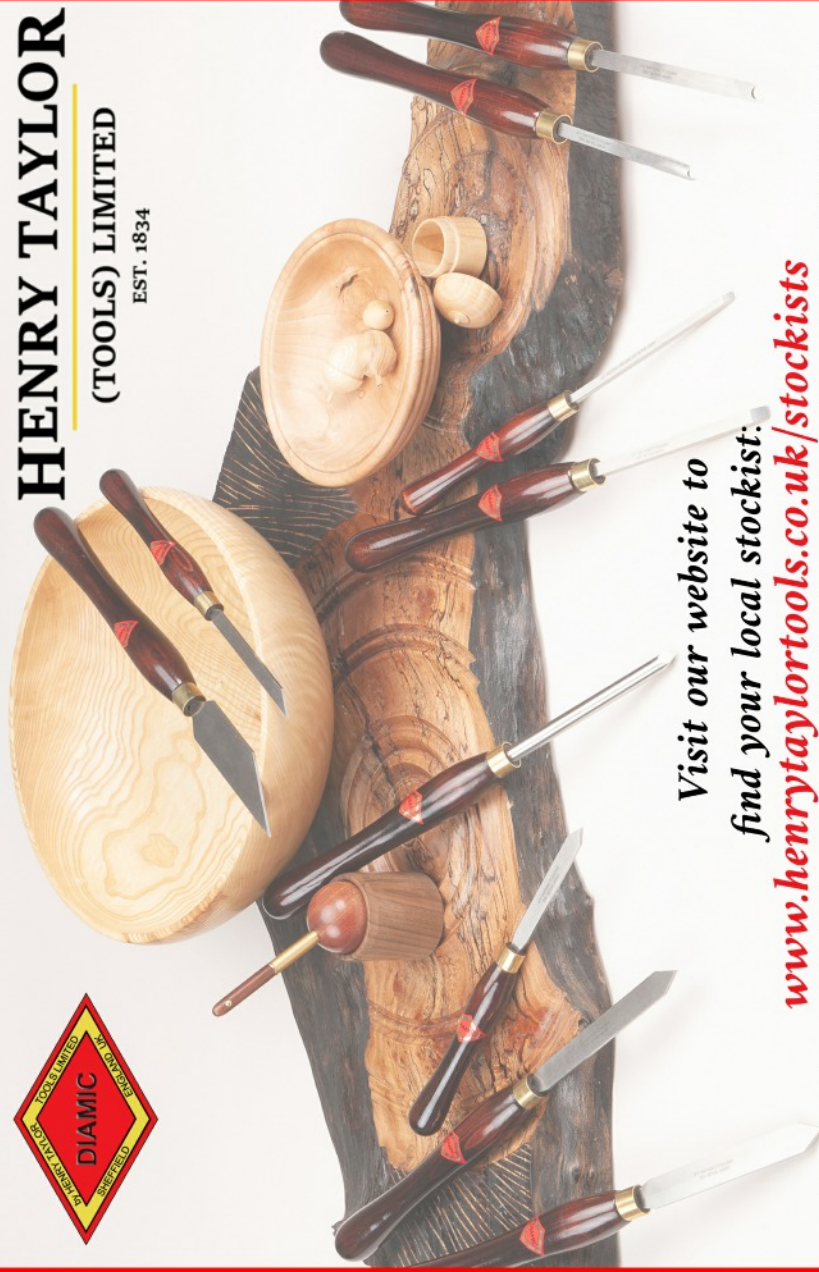




HENRY TAYLOR

(TOOLS) LIMITED

EST. 1834



*Visit our website to
find your local stockist:*

www.henrytaylortools.co.uk/stockists

web: www.henrytaylortools.co.uk | email: sales@henrytaylortools.co.uk | tel: 0114 234 0282

Paul Fryer Demo - continued

Coloured & Textured Flying Saucer Bowl

Paul's second project of the evening was a flying saucer shaped bowl with colouring and texturing. Starting with an Elm bowl blank 10" diameter and 2" thick mounted on a face-plate ring, Paul shaped the bottom to curve upwards to the centre and cut a chucking recess (Paul prefers a recess as he can re-mount it later to re-polish after it has been handled at shows). Paul mounted it on the recess and turned another curve on the top, leaving the bowl flying saucer shaped. He then hollowed out a small dish in the centre.



Power Carving

Marking several bands on the curved top, Paul fitted a mini carving disc to the Arbortech. Using the tool rest for support, he demonstrated the different patterns that can be produced by angling the cutting disc in different directions. Black paint highlighted the different designs. A quick bit of cleaning between the textures finished the demo.



KEEP ON TURNING

Discover some of our most popular lathes...

Woodturning Lathes from Axminster Tools

When it comes to woodturning, we know a thing or two about what you need to keep things turning. No matter what level of turning you're at or which style you prefer, we offer a range of woodturning lathes to suit your needs.

From entry level upward to highly sophisticated, we work closely with professional woodturners and trusted suppliers to design, develop and manufacture quality woodturning lathes that you can rely on.



AW205W

Woodturning Lathe

Small, compact and packing with all the features to meet the needs of the keen craft woodturner.

- Distance between centres: 330mm
 - Power: 250W
 - Speed: 750-3,200 rpm
- £239.98** Code: 107699



AW368WL Woodturning Lathe

A turning dream come true; take on larger projects and fulfil long held ambitions.

- Distance between centres: 610mm
 - Power: 750W
 - Speed: 250-3,550 rpm
- £1398.78** Code: 107226



3 YEAR GUARANTEE
Available on all Axminster lathes.



AP350WL

Woodturning Lathe

Tailored to your turning needs, keep it as is or add the optional bed extension to give you even more capacity.

- Distance between centres: 400mm
 - Power: 750W
 - Speed: 80-800 / 170-1700 / 350-3700 rpm (var)
- £1049.98** Code: 107655



AP406WL Woodturning Lathe

A popular choice among discerning woodturners; regularly featured on our Woodturning Wisdom channel.

- Distance between centres: 710mm
 - Power: 1.5 kW
 - Speed: 50-1,250 / 150-3,750 rpm (var)
- £2,399.98** Code: 720773

Scan QR or visit axminstertools.com to discover all lathes available. To view the Axminster Tools product range visit one of our stores, search axminstertools.com or call **03332 406406**

Prices valid at time of printing. For up-to-date pricing and for full terms and conditions please visit axminstertools.com. All prices subject to availability and subject to change without notice. E&OE.

AXMINSTER • CARDIFF • HIGH WYCOMBE • NEWCASTLE • SITTINGBOURNE • WARRINGTON

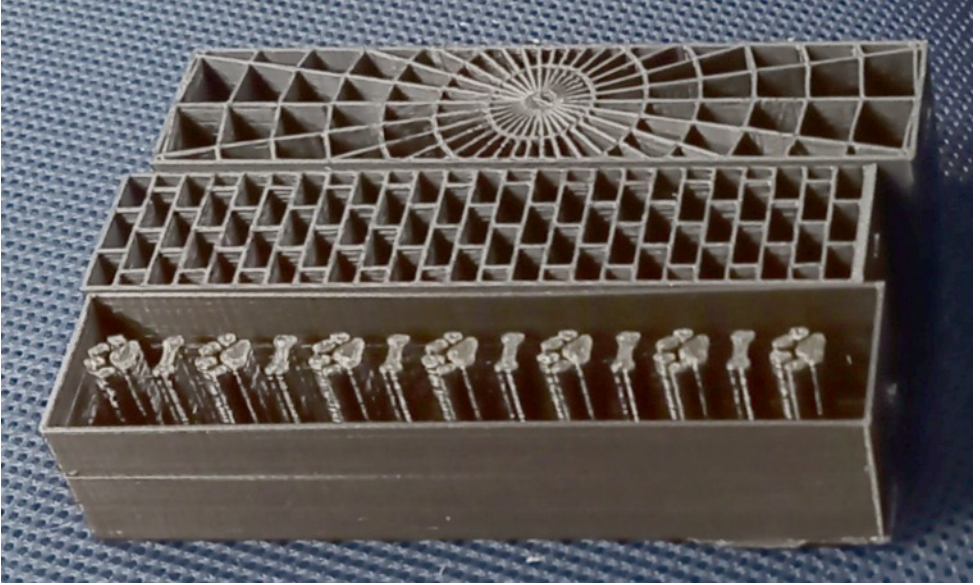


AXMINSTER TOOLS

We share your passion.

Rated 'Excellent' on Trustpilot

Paul Fryer Demo - continued



These are some pen blank moulds 3D printed by Paul. They will be filled with resin and turned - complete with the plastic mould. The top two are self explanatory, the bottom mould contains paw prints. He hasn't tried them yet but they will certainly be unique. As with most home 3D printers, they take several hours to print each one.

CHRIS
PARKER

MARY
ASHTON

ANDREW
HALL

GARY
RANCE



WOODTURNING WEEKENDER 5: RETURN TO SPRINGFIELDS

10-11 AUGUST 2024
SPALDING - LINCOLNSHIRE

AMAZING DEMONSTRATIONS! STUNNING DISPLAYS!
IMPRESSIVE ADVICE! MONEY-SUCKING TRADE STANDS!

FEATURING... BEE AND ANDY MATTHEWS • ALAN CRAMER • DAN REES • COLIN WATSON • STEPHEN MADDEN



SOUND &
VISION BY

POPCORN MEDIA • DISPLAYS BY LOCAL CLUBS • AWGB • SUPPORTED BY AXMINSTER TOOLS

CHESTNUT
PRODUCTS

WOODTURNINGWEEKENDER.CO.UK

ORGANIZERS RESERVE THE RIGHT TO CHANGE LINE-UP

Roy Nicholls

Obituary & Funeral Arrangements

Roy Nicholls 1951 – 2023

Sad to report that Roy Nicholls passed away on Monday 9th October 2023 after a short illness and a fall.

Roy was a founder member of Coombe Abbey Woodturners and was heavily involved with the club for many years holding the post of chairman for some of that time. Roy always volunteered to operate a lathe at our hands on meetings and at open



days at Coombe Country Park and at other outside events such as the Daffodil Festival at Monks Kirby and at the Godiva Festival in Coventry Memorial Park.

Roy was chairman of the club when we were successful in securing a Lottery Fund Grant which enabled us to equip and open the present workshop at Coombe which has proved to be very popular with members and allow the club to teach members of the public who after two lessons are asked to join the club.

Roy will be sadly missed by those who knew him and this club offers our sincere condolences to his son Simon and to Roy's wider family.

Funeral at Canley Crematorium on Wednesday 8th November at 11.15 am. Flowers from family only but donations will be gratefully received for the Warwickshire Air Ambulance.

Graham Ball (Club Chairman)



Brought to you by:
HENRY TAYLOR
(TOOLS) LIMITED
EST. 1834

hamlet
CRAFT TOOLS

Find your local stockist at:

www.hamletcrafttools.co.uk/stockists

email: sales@hamletcrafttools.co.uk | tel: 0114 232 1338 | web: www.hamletcrafttools.co.uk

Notices

From Next Year No More Paper Copies of the Newsletter

Printing paper copies of the newsletter (in black and white) costs the club over £400 per year to print. It was decided at the last committee meeting that, *from next year, paper copies will no longer be sent to members*. Make sure that Lee has your email address so that you can continue to receive the full colour newsletter via email. Sorry if this affects you but, with room rent and demonstrator costs rising, the committee felt that we could make better use of the money.

Booking Training Sessions

Michael Archer is now handling all training session bookings.

Please phone him on 02476 448311.

Do not book a session without Michael's prior agreement.

AWGB Subscriptions

With immediate effect, the AWGB is increasing its membership subscription from £18 to £21. Family membership is also increasing.

The club subscription will remain at £10 per year.

Lee Cartwright will be arranging payment sessions to make it easier and more convenient to pay your subscription. Dates, times and locations will be published later.

Christmas Competitions

Rhodes' Trophy

Open to anyone who has not won before. Turned item of own choice.

Austin's Trophy

Open to anyone. A Goblet.

Jim Elliot Trophy

Open to anyone. Christmas themed item (majority must be turned).

Roger Warren-Finding Trophy

Open to anyone. Turned item of own choice.

***New* John Bradbury Memorial Trophy**

Open to anyone. A Hollow Form.




Yandles





**TIMBER SELF-SELECTION CENTRE
TOOLS & MACHINES | ARTS & CRAFTS
GIFT & HOME | SAWMILL | CAFÉ**

**A shopping experience for all in the
Heart of Somerset**

FREE CAR PARKING | OPEN EVERY DAY

 Martock, TA12 6JU

 01935 822 207

 www.yandles.co.uk



Activities of other clubs in the Midlands area

As a matter of courtesy and to ensure that there is space available to accommodate members wishing to visit other clubs demo's, please use the contact telephone number where shown.

North Warwickshire & Hinckley Woodturners

Tuesday November 7 Hollowing Hands-On
Tuesday November 21 9-axis Honey Dipper Ian Ethel
Contact Steve Obrien 01788-521527

Tudor Rose Woodturners

Thursday 9th November 2023 Club Demonstrator
Thursday 23rd November 2023 Mick Hanbury
Contact Colin Smith 07939-004375 communications@tudor-rose-turners.co.uk

West Midlands Woodturners

Sunday 19th November AGM and Hands On – Colours & Stains
Contact John Hooper 0121 354 8464

West Northants Woodturners

Wednesday 1st November Viv Harvey and November competition.
Wednesday 15th November Dave Simms
Contact Tom Donnely 01327 349093

Trent Valley Woodturners

No info available

Contact Ian Ethell <https://www.trentvalleywoodturners.co.uk/contact/>

Sanding needs as much care as construction and design. As much care needs to be taken in sanding as in the construction of a piece of work. A few minutes poor sanding technique can irreversibly destroy great craftsmanship and many hours work.



THE ULTIMATE ABRASIVE! RB406 J.FLEX. TRIAL PACK

1M OF CLOTHLINEACH OF THE FOLLOWING GRITS

P80, P120, P240 AND P320 £14.75 INC VAT ORDER CODE 12 806 RB406

J.Flex is the best abrasive for every workshop. It's ideal for turning, woodworking and metal working. The distinctive blue abrasive with the yellow backing is the softest and most flexible abrasive we have ever discovered. The ultimate abrasive for all kinds of woodworking, especially sanding in acute areas. This cloth can be twisted and folded without grain dis-adhesion. Rolls are 100mm wide. **ALSO AVAILABLE BY THE METRE.**



VELCRO-BACKED ROLLS.

TRIAL PACK 1M OF P100, P150, P240 AND P320 PLUS A SAMPLE STRIP OF VELCRO REPLACEMENT WITH PEEL OFF SELF ADHESIVE BACKING. £14.75 INC VAT ORDER CODE 13159 ALSO AVAILABLE BY THE METRE. PLUS- IT PAYS TO BUY BIG. WITH OUR BULK RATE PRICES YOU'LL SAVE MONEY ON THE GRITS YOU USE MOST.

Cut off any length to suit your own sanding application. Every workshop should have at least two or three grades of this to hand. Especially manufactured by Harnes abrasives for us. Ideal for those shop made sanding devices which you can now make to your own specification. Hook and loop, or velcro attachment does away with the unpleasant task of clamping the paper to the machine allows rapid changing of the sheet and encourages the use of more grits extending the finish quality and life of the abrasive. Rolls are 115mm wide.

For your free catalogue call 01636 688888 or e-mail sales@abrasivesplus.com or visit our on-line shop at www.abrasivesplus.com where all our products are featured and it's free carriage!

CSM ABRASIVES PLUS UNIT 2 NORTHERN ROAD, NEWARK, NOTTINGHAMSHIRE, NG24 2EH

TEL - 01636 688888

FAX - 01636 688889

sales@abrasivesplus.com

www.abrasivesplus.com

Equipment For Sale

Disclaimer

The club is not responsible for any item appearing on these pages.
The buyer and seller must make their own arrangements as to the condition, suitability, delivery, payment and price etc.



Charnwood W815 wood lathe, tools and tommy bar operated chuck. £75
Collection only from Thornton, Leicestershire.
Contact Rob Sheehan acting for the seller.

CHESTNUT FINISHES

Any item from the catalogue can be supplied.
10% discount on Chestnut finishes
for Club members.

Ring: Eric Taylor on 02476 328831

**RECORD
POWER**
ESTABLISHED 1909®

THE NEW STANDARD FOR WOODTURNING

We are proud to introduce our new range of turning tools, made in the UK at our in-house production facility. Designed in consultation with and tested rigorously by professional woodturners, they represent a new standard in quality and value.

When you buy a Record Power turning tool you are investing in many years of manufacturing expertise and knowledge from a brand with a rich heritage of woodturning specialisation.

"The new Record gouges have fantastic edge longevity and strong ergonomic handles. All you need in a quality woodturning gouge: stay sharp, feel good and turn well."

Andrew Hall RPT, Professional Woodturner and Tutor



3-Piece HSS Bowl Turning Tool Set

This set contains the three essential tools for bowl turning - 3/8" bowl gouge, 1/2" domed scraper and 3/16" parting tool.
103720



3-Piece HSS Spindle Turning Tool Set

This set contains the three essential tools for spindle turning - 1" spindle roughing gouge, 3/8" spindle gouge and 1/8" parting tool.
103710



Free online educational videos
available at
recordpower.co.uk/turningtools



View our full range at recordpower.co.uk Bowl Gouges | Spindle Gouges | Spindle Roughing Gouges | Skew Chisels | Scrapers | Parting Tools

All prices include VAT (EURE).

**MADE IN
BRITAIN**

**MADE IN
SHEFFIELD**

Over
100
years
Experience • Knowledge
Support • Expertise

Incorporating some of the most famous
brands in woodworking, Record Power's
roots stretch back over 100 years.

RECORD POWER

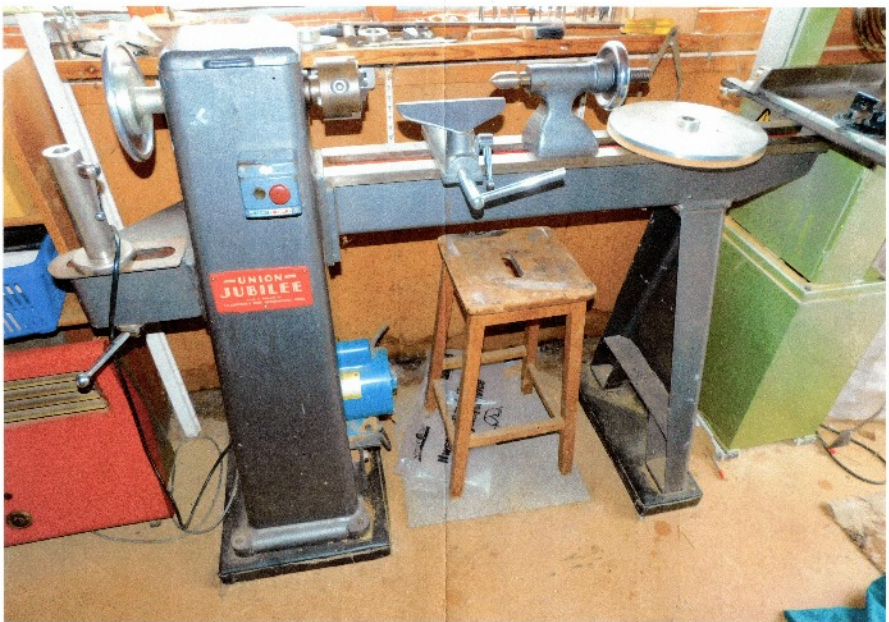
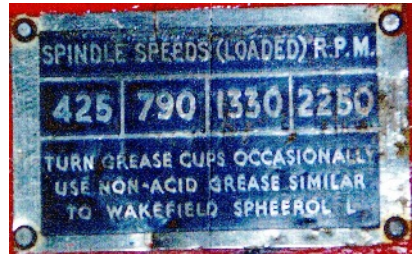
CORONET **STANTINE**
CamVoc **BLISS**

For more details visit
recordpower.co.uk or
contact your local stockist

RECORD POWER
ESTABLISHED 1909

Equipment for sale - continued

Jubilee Lathe. *Reduced price £350.* See Graham, Lee or Eric. Tools and chuck included. Currently dismantled for storage but was fully working.



PROOPS BROTHERS

ENGLAND • EST 1946

.COM

ALL PRICES INCLUDE POST AND PACKING

1000'S OF OTHER PRODUCTS

INSIDE, OUTSIDE PLASTIC CALLIPERS



Measurements

0 - 200mm M7176 **£4.60**

0 - 350mm W3509 **£6.80**

Tool Handles



Wood Ash Handles
with Brass Ferrules
for Wood turning Tools

3 x 225mm Long **£10**
Product Code W3400

5 x 125mm Long **£10**
Product Code W8056

**Woodturners 12" Outside
Plastic Calipers W3462**



£3.60

OILSTONE & BOX



£5.50

Fine and
course sides
W3330

CHUCKS

Drill Chuck 10mm
with 2MT Arbor
Product code M0412

£11.99

Drill Chuck 10mm
with 1MT Arbor
Product code M0411

£8.50



**One Piece Finger Sander,
20mm & 3 Spare Belts.
Product Code W8018**



£5.50

Sheffield Made SJ & JB Addis Skew Chisel HSS.

1/4" x 5/32" W8009

£9.50



Proops Brothers Ltd 34 Saddington Rd. Fleckney, Leicestershire, LE8 8AW
TEL. 0116 2403400 WWW.PROOPSBROTHERS.COM EBAY USER NAME: SPOORP

Members' Work



Let **TMS** look after your Volvo



SALES // SERVICE PARTS // ACCESSORIES

With over 300 years combined experience of working with Volvo, nobody knows your Volvo like **TMS**.

With award-winning levels of customer service and state-of-the-art facilities at Trinity Marina, what ever your Volvo requirements, the **TMS** team can deliver.

*Call in and
see us soon!*



QUALITY • CARE • PERSONAL SERVICE



Coventry: TEL. **02476 303132**

Hinckley: TEL. **01455 632478**

Leicester: TEL. **0116 2758800**

www.tmsmotorgroup.co.uk/volvo

Members' Work - continued



Members' Work - continued



Calendar of Events 2023

Saturday December 9 Christmas party 12:30 Walsgrave

Calendar of Events 2024

Saturday January 6 AGM Walsgrave

Saturday January 13 Display/Demo at Warwick Racecourse

Friday February 16 Ian Ethell Shilton

Saturday March 16 Chris Parker Walsgrave

Saturday April 20 Mick Hanbury Walsgrave

Friday/Saturday May 10/11 Woodworks at Daventry

Saturday July 13 Gary Rance Walsgrave

Saturday September 7 Steve Heeley Walsgrave

Friday October 18 Lee Cartwright Shilton

Saturday December 14 Christmas party 12:30 Walsgrave

Meeting Locations:

Walsgrave Baptist Church, 10am - 4pm

Hinckley Road, Coventry, CV2 2EX.

Shilton Village Hall, 6:30pm - 9pm

Wood Lane, Shilton, CV7 9JZ

Next Meeting

Christmas Party

Saturday 9th December at Walsgrave Baptist Church

12:30 pm start

Coming up

Saturday January 6th AGM