

Coombe Abbey Woodturners NEWSLETTER

July



2025

This Month's Sponsor



DATA PROTECTION

Your personal details are held on a computer belonging to an officer of the Coombe Abbey Woodturners. Your details are purely for the use of the Club, and are not passed to any third party. If you object to your name, address and telephone number being held on a computer belonging to an officer of the Club, then please write to any member of the committee.

HEALTH & SAFETY NOTICE

Woodturning can be dangerous! Always follow the manufacturers' instructions and safety advice when operating power tools. Never try the techniques shown at our demonstrations or in our Newsletter if you are unsure or the procedure does not feel safe. Always use the guarding and other safety equipment.

The Club takes reasonable care to operate and instruct in a safe manner and strongly recommends all members to follow the Club's Health and Safety rules and the guidance notes that the AWGB issue in their Revolutions magazine from time to time.

Committee Members and Contacts

Chairman, Treasurer & Membership Secretary	Lee Cartwright
Vice Chairman	Giles Headley
Secretary & Library Custodian	Peter Orange
Events Secretary	Patrick Byrne
Newsletter & Web Site Editor	Rob Sheehan
	Graham Ball
	Graham Cashmore
	Rod Young
	Phil Steele
	Graham Hudspith
Training Coordinator	Michael Archer

Website: <https://www.coombeabbeywoodturners.org>

**Copy Deadline for the August 2025 issue of the Newsletter is:-
Wednesday 23rd July 2025**

**Please forward your News, Stories and Photographs to:-
Robert Sheehan- Newsletter Editor -
M: 07905 185122. E-mail: robsheehan@virginmedia.com**

© Copyright Coombe Abbey Woodturning Club 2025

The content of this newsletter must not be copied or reproduced without the written permission of the newsletter editor.

In This Issue	Page
Vice Chairman's Jottings	4
One Line Philosophers	5
This month's Sponsor	6
Pole Lathe - Bowl	8
Pole Lathe - Spindle Turning	20
Teaching at Coombe	28
Items For Sale	29
Notices	36
Activities of Other Clubs	37
Coombe branded items	38
Workshop Charge Notice	39
Calendar of Events	40

From the Editor



This is the Phil Steele Pole Lathe special issue. Inside, you will find two reports on club member

Phil Steele and the Pole Lathe. In the first, Phil was out in the woods turning a bowl. In the second, Phil was demonstrating his own Pole lathe at Hinckley Woodturning Club.

Our next demonstration is on Saturday July 12th, when Phil Steele will be demonstrating how he makes Windsor Chairs.

Members of the public having lessons can be found on page 28.

Coombe Woodturners branded items can be found on page 38. See Lee or Martin to order.

I would also like to thank Bob Blenkinsop and Peter Nichols for donating some very nice wood to the club. Bob's Beech logs have some very nice spalting (see page 28). Peter's assortment of kiln-dried timber has already attracted some interest.

Regards

Rob

Advertisers	Page
CSM Abrasives Plus	7
Record Power	9
Proops Brothers	11
TMS Volvo	13
Turners Retreat	15
Charnwood	17
Crown Hand Tools	19
Henry Taylor	21
Chestnut Products	23
Hamlet	25
Yandles	27

Vice Chairman's Jottings

Summer's finally here so make sure all your freshly cut timber doesn't dry out too quickly and crack!

Firstly, on behalf of all the members, I offer our warmest congratulations to Lee and Jayne for their recent marriage. The photos posted on Facebook showed a very happy couple and their family.



In the absence of clear information from the Godiva Festival, and a lack of enthusiasm for being constrained as we were last year, the club will not be attending.

The next full-day demonstration at Walsgrave Baptist Church will be on Saturday 12th July, where Phil Steele will be using his pole lathe and ancillary equipment to produce parts of a Windsor Chair. Quite a number of committee members will be absent, so we hope that as many members as possible will go and support Phil's efforts, as well as help set up and clear down. As usual, Jill and Alison will be providing the refreshments and lunchtime jacket potatoes.

In early June I took part in Art House Leicester, billed as "Extraordinary Art in Ordinary Houses", where, with 80 other artists and artisans in 14 homes, I exhibited my woodturning for sale. It was reported that over 1600 people visited throughout the Friday evening, Saturday and Sunday. I had had a very successful event (my first time taking part) in 2024, and this year was just as enjoyable. A number of people asked about woodturning classes and courses. I provided them with CAWT info, including Mike Archer's number for them to call and book a lesson.

Further modifications have recently been made to the workshop, with another project bench, including storage beneath, now residing behind the window display. Portable Appliance Testing has been carried out on all the electrical items in the workshop.

Tickets for our annual raffle are now available in the workshop or from Jill Steedman. They are priced at £1 each. Please support our fundraising efforts by buying a couple of books-worth for yourself and selling more to family and friends.

Whatever you get up to during the summer, stay safe. I look forward to seeing you at the workshop or at club events.

Best wishes

Giles

One Line Philosopher:

“It was a bright, cold day in April, and the clocks were striking thirteen.”
George Orwell. Nineteen Eighty-Four. 1949

This Month's Newsletter Sponsor

CSM Abrasives

I am very pleased to welcome CSM Abrasives Plus once again as a sponsor of this monthly Newsletter magazine. As suppliers and stockists of high quality abrasives for trade, industry, refinishing and home and hobbyist use, it is a great place to start for all your abrasive needs.

As always I urge you to support our sponsor by purchasing from them and in turn you will be ensuring the continuation of this Newsletter by their valuable sponsorship.

Editor

CSM Abrasives (A Company Profile)

CSM Abrasives Plus can be found in Newark, Nottinghamshire.

We have many years of experience in the abrasive industry, both technical and practical. We are suppliers and stockists of high quality abrasives for trade, industry, refinishing and home and hobbyist use.

Many products here are specialist niche items, which were previously difficult to find but are now together in one web site. These, along with all the usual abrasive products you would expect to find, from discs in velour or self adhesive, to narrow and wide belts and grinding and polishing products, make up our ever expanding product range.

We also offer a selection of very competitively priced, high quality accessories and tools to complement the abrasives, which allows you to buy all the items you need for your project from one source. If we can't help you, we can access someone who can. We want to do the best we can for you. We try our hardest to deal with our customers in the same way as we would wish to be dealt with ourselves.

Tel: 01636 688888

Email: sales@abrasivesplus.com

CSM Abrasives Plus, Unit 4, Northern Road, Newark. NG24 2EJ

For more information visit <https://www.abrasivesplus.com/>

**THE MAIL ORDER
ABRASIVE SPECIALISTS**

Sanding needs as much care as construction and design. As much care needs to be taken in sanding as in the construction of a piece of work. A few minutes' poor sanding technique can irreversibly destroy great craftsmanship and many hours work.



**THE ULTIMATE ABRASIVE!
RB406 J.FLEX. TRIAL PACK**

1M OF CLOTH EACH OF THE FOLLOWING GRITS

P80, P120, P240 AND P320 **£14.75** INC VAT ORDER CODE **12806 RB406**

J.Flex is the best abrasive for every workshop. It's ideal for turning, woodworking and metal working. The distinctive yellow backing is the softest and most flexible abrasive we have ever discovered. The ultimate abrasive for all kinds of wood working especially sanding in acute areas. This cloth can be twisted and folded without grain dis-adhesion. Rolls are 100mm wide, **ALSO AVAILABLE BY THE METRE.**



VELCRO-BACKED ROLLS.

TRIAL PACK 1M OF P100, P150, P240 AND P320 PLUS A SAMPLE STRIP OF VELCRO REPLACEMENT WITH PEEL OFF SELF ADHESIVE BACKING. **£14.75** INC VAT ORDER CODE 13159 ALSO AVAILABLE BY THE METRE. PLUS- IT PAYS TO BUY BIG.

WITH OUR BULK RATE PRICES YOU'LL SAVE MONEY ON THE GRITS YOU USE MOST.

Cut off any length to suit your own sanding application. Every workshop should have at least two or three grades of this to hand. Especially manufactured by Harnes abrasives for us. Ideal for those shop made sanding devices which you can now make to your own specification. Hook and loop, or velcro attachment does away with the unpleasant task of clamping the paper to the machine, allows rapid changing of the sheet and encourages the use of more grits extending the finish quality and life of the abrasive. Rolls are 115mm wide.

For your free catalogue call 01636 688888 or e-mail sales@abrasivesplus.com or visit our on-line shop at www.abrasivesplus.com where all our products are featured and it's free carriage!

CSM ABRASIVES PLUS
TEL- 01636 688888

**UNIT 2 NORTHERN ROAD,
FAX- 01636 688889**

NEWARK, NOTTINGHAMSHIRE, NG24 2EH
sales@abrasivesplus.com

www.abrasivesplus.com

Bowl Turning on a Pole Lathe

By Phil Steele 25th May 2025



The bowl was completed during a day course at 'Greenwood Days', led by Ali Asadi.

<https://greenwooddays.co.uk/>

It was an excellent day learning new skills selecting wood (in this case silver birch), using an axe for carving and mounting and turning the wood on the pole lathe using a hook tool to produce a bowl.

This is a bowl turning pole lathe. Simple but heavier construction.



Log ready for splitting.
The small circle is identifying the pith.

Marking the log after splitting for the maximum size bowl.



**RECORD
POWER**
ESTABLISHED 1909®

THE NEW STANDARD FOR WOODTURNING

We are proud to introduce our new range of turning tools, made in the UK at our in-house production facility. Designed in consultation with and tested rigorously by professional woodturners, they represent a new standard in quality and value.

When you buy a Record Power turning tool you are investing in many years of manufacturing expertise and knowledge from a brand with a rich heritage of woodturning specialisation.

"The new Record gouges have fantastic edge longevity and strong ergonomic handles. All you need in a quality woodturning gouge: stay sharp, feel good and turn well."

Andrew Hall RPT, Professional Woodturner and Tutor



3-Piece HSS Bowl Turning Tool Set

This set contains the three essential tools for bowl turning - 3/8" bowl gouge, 1/2" domed scraper and 3/16" parting tool.

103720



3-Piece HSS Spindle Turning Tool Set

This set contains the three essential tools for spindle turning - 1" spindle roughing gouge, 3/8" spindle gouge and 1/8" parting tool.

103710



Free online educational videos
available at
recordpower.co.uk/turningtools



View our full range at recordpower.co.uk | Bowl Gouges | Spindle Gouges | Spindle Roughing Gouges | Skew Chisels | Scrapers | Parting Tools

All prices include VAT. Excl.

**MADE IN
BRITAIN**

**MADE IN
SHEFFIELD**

Over
100
years
Experience • Knowledge
Support • Expertise

Incorporating some of the most famous
brands in woodworking, Record Power's
roots stretch back over 100 years.

RECORD POWER

CORONET **STANTINE**
CamVoc **BLISS**

For more details visit
recordpower.co.uk or
contact your local stockist

RECORD POWER
ESTABLISHED 1909

Bowl Turning on a Pole Lathe - continued

Marking the underside of the split log, showing the possible size of the bottom foot, indicating where to start axing.



Taking the corners off at the start of axing.



Corners removed with the axe.



Shape of the bowl after axing.

PROOPS BROTHERS

ENGLAND • EST 1946

.COM

70 years of
tooling excellence

Push sticks



3 Types of Push-Sticks J8088



A Standard for pushing sheets and blocks



B Spikes to grip logs



The stepped edge can be trimmed off for thinner sheets



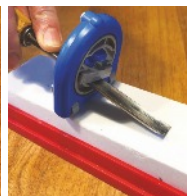
C Rounded for rounded edge support



Sharpening jigs



Gouge sharpening Jig Honing Guide for arc shaped blades W8065



Sanding



10, 20 & 40mm
Finger Sanders
W3291, W3292 &
W8016

25mm File
Sander W3201

Handy Sander
W3293



Standard
Honing
Guide
X1035

Oil
Stone
Box
W3330

Calipers & Dividers



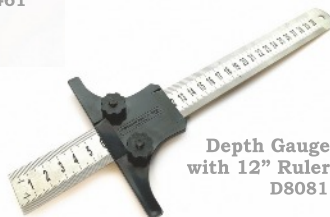
Inside Outside with
measurements
M7176 & W3509



W3461



W3460



Depth Gauge
with 12" Ruler
D8081

View our website for 1000's of woodworking, craft and hobby tools

proopsbrothers.com

tel: 0116 2403400

Bowl Turning on a Pole Lathe - continued

Pre-cut mandrel with mounting spikes.



Inserting the mandrel into the face of the bowl.

Mount the bowl with the mandrel.
Line up ready for turning.



Turn the outside of the bowl using the hook tool.

V O L V O

Let **TMS** look after your Volvo

SALES // SERVICE
PARTS // ACCESSORIES

With over 300 years combined experience of working with Volvo, nobody knows your Volvo like **TMS**.

With award-winning levels of customer service and state-of-the-art facilities at Trinity Marina, what ever your Volvo requirements, the **TMS** team can deliver.



QUALITY • CARE • PERSONAL SERVICE



Coventry: TEL. **02476 303132**

Hinckley: TEL. **01455 632478**

Leicester: TEL. **0116 2758800**

www.tmsmotorgroup.co.uk/volvo

Bowl Turning on a Pole Lathe - continued

Continue to turn the outside of the bowl. The foot with the centre will be carved off on completion.



Outside complete. Reverse the mandrel and bowl ready to hollow the centre.

Begin to turn the inside of the bowl using the hook tool but leaving the centre core.



Continue to turn the inside of the bowl. Once the shape is good, start reducing the size of the centre waste.

Supporting makers and small businesses

Join our Community Showcase and have your work featured on our website and social media pages; no fees apply.

- We share a monthly theme
- You submit a relevant piece of work
- Send us links to your online shop and socials
- We'll post it all on our website for free!

Increase your online presence and potentially boost sales!



Scan me!

Turners Retreat
THE WOODWORKERS SOURCE

www.turners-retreat.co.uk



Works submitted must be your own and must be made using at least one product purchased from Turners Retreat.

Bowl Turning on a Pole Lathe - continued

Continue to turn the bowl, turning the centre core until it is thin enough to snap off.



Carve off the foot with a spoon knife.

Remove the knob in the centre using the spoon knife.



charnwood

Established 1977

Woodworking machinery at its best!

e-mail: sales@charnwood.net

Tel: 01530 516926

www.charnwood.net

Introducing our new Wood Turning Chisel Sets

We're excited to announce we now have in stock our sets of Quality Woodturning Chisels.

Check out these superb sets, whether you are after a traditional set, or looking for something updated with the latest technology, we are sure you will be happy with whichever you choose

TCSET4S

Carbide Tipped Wood Turning Tool, 4 Piece Set

£119.00



A set of 4 carbide scraper turning tools, incorporating the newest technology in woodturning: Replaceable carbide cutting tips.

4 Piece set includes:

- Round Carbide Cutter - Spindle Cove & Bowl Interior
- Square Carbide Cutter - Flat Straight Edges
- Radius Carbide Cutter - Spindle Bead & Bowl Exterior
- Triangle Carbide Cutter - Details & Decorative Work

TCSET3H

Carbide Turning Tools For Hollowing, 3 Piece Set

£139.00



A set of 3 carbide scraper turning tools, incorporating the newest technology in woodturning:

Replaceable carbide cutting tips.

3 Piece set includes:

- Carbide Tipped - Straight
- Carbide Tipped - Shallow Curve
- Carbide Tipped - Full Curve

M2CSET6

Cryo Hardened M2 HSS Woodturning Chisel Set

£219.00



Premium quality set of 6 woodturning chisels for spindle and bowl turning.

6 Piece set includes:

- 28mm (1") Roughing Gouge
- 19mm (3/4") Flat Skew Chisel
- 12mm (1/2") Spindle Gouge
- 12mm (1/2") Bowl Gouge
- 4mm (3/16") Diamond Parting Tool
- 19mm (3/4") Round Nose Scraper

Bowl Turning on a Pole Lathe - continued



The finished bowl.

See

<https://greenwooddays.co.uk/>
for course information.



INTRODUCING THE NEW REVOLUTION

The 'revolution' is a completely new hollowing system from the world leaders in fine turning tools. From its beautifully weighted handle to its cryogenically treated cutting tips the 'revolution' is designed to be the finest hollowing tool on the market.

The modular articulated design allows the woodturner the freedom and flexibility to configure the tool for any situation. From straight vases to heavily undercut hollow forms the 'revolution' has it covered.

At the heart of the 'revolution' is the new fully depth adjustable 'super ring' the revolutionary design of the 'super ring' ensures clean efficient wood removal at all times with 5 different cutting tips and modular articulation design the revolution is a must have tool for all woodturners.



- Supplied with 5 different cutting tips for unrivalled flexibility.
- Clever modular design allows for many different configurations.
- All collars and collars beautifully machined from solid 'marine grade' brass billet.
- High performance cryogenically treated cutting tips for vastly improved wear resistance.
- New adjustable 'Super ring' allows ultra efficient wood removal without clogging.
- Slim-line articulated tip design for unrestricted access to those hard to reach cuts.
- Expandable.
- Hard made in Sheffield, England.



Tel. 0114 261 2300
Fax. 0114 261 2305

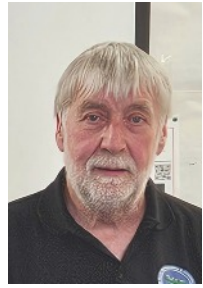
Web. www.crownhandtools.ltd.uk
Email. info@crownhandtools.ltd.uk



Spindle Turning on a Pole Lathe

Phil Steele 17th June 2025

After researching plans in books and on the internet, Phil made his own Pole lathe during the Covid lockdown. It has been popular with the public at many Coombe open days.

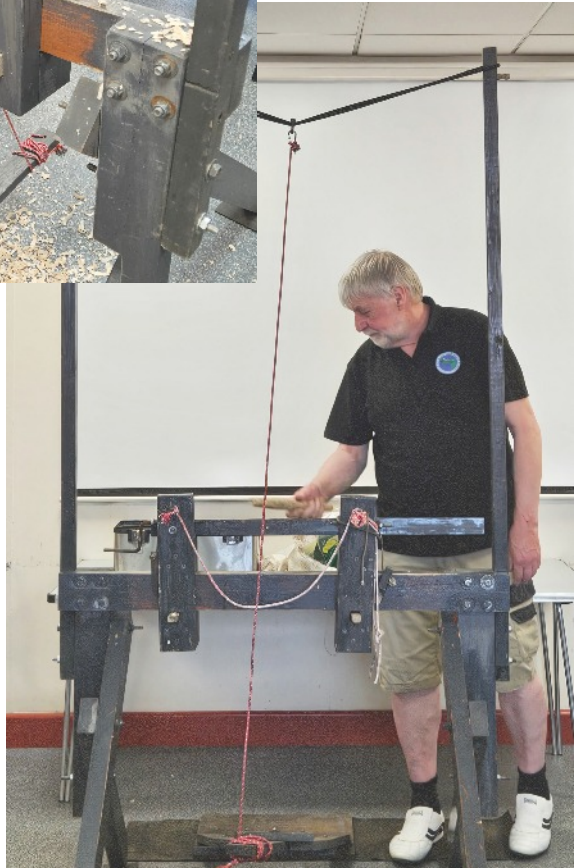


Phil uses bungee cords to provide the return power when the foot is lifted off the treadle.

Wedges lock the head stock and tail stock in place for different lengths of timber.

A threaded rod at the tail stock end is wound in and out to lock the timber in place.

Grease lubricates the fixed centres.





HENRY TAYLOR

(TOOLS) LIMITED

EST. 1834



*Visit our website to
find your local stockist:*

www.henrytaylortools.co.uk/stockists

web: www.henrytaylortools.co.uk | email: sales@henrytaylortools.co.uk | tel: 0114 234 0282

Spindle Turning on a Pole Lathe - continued

Winding in the tail stock to lock the timber between centres. The centres don't rotate, so a bit of grease on the points stops them squealing when the piece rotates.

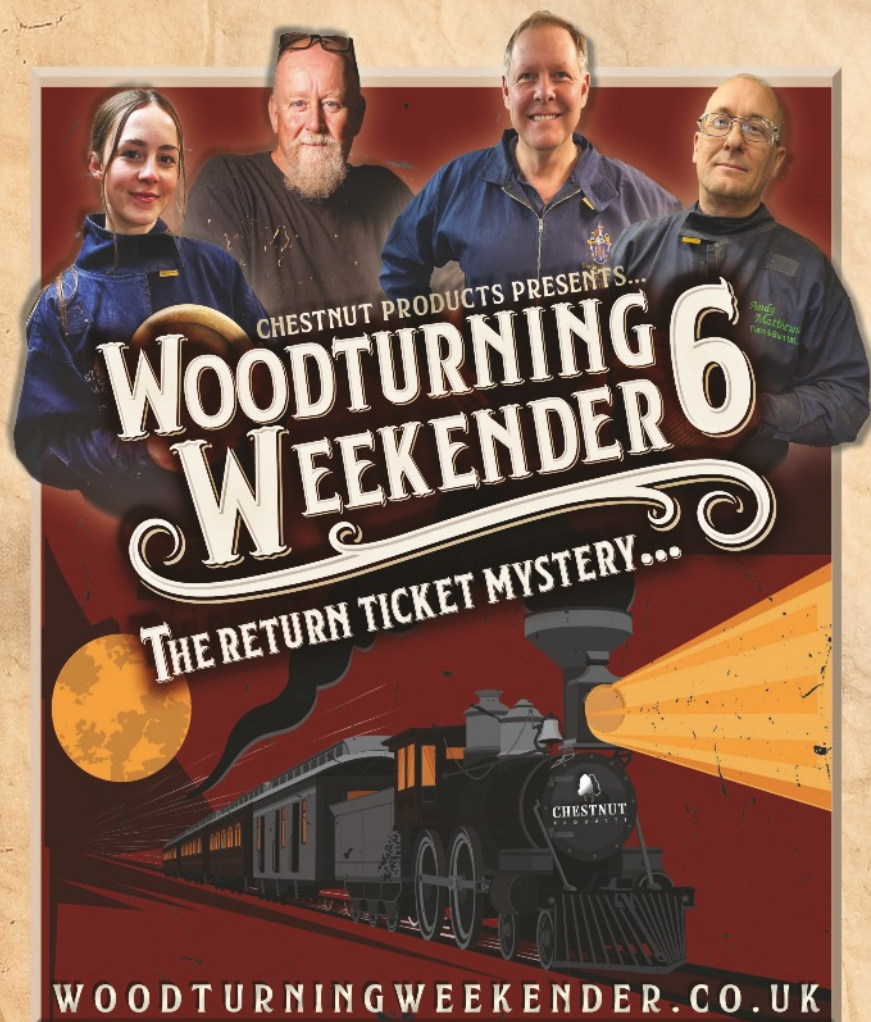


The tool cuts on the forward stroke and is lifted off as the piece rotates in reverse when the foot is lifted off the treadle. Applying pressure to the tool and lifting off on the backward stroke is part of the skill when using a Pole Lathe.



Cord from the bungee above to the treadle below, wrapped round the piece to be turned provides the driving force.





9-10 AUGUST 2025 • STEAM, FIRE FLY AVENUE, SWINDON, SN2 2EY

THE MAIN SUSPECTS... KATIE ARMSTRONG • ANDY FORTUNE • SIMON HOPE • ANDY MATTHEWS

BE ON THE LOOKOUT FOR... AWGB • ALAN CRAMER • GIANNI DEIDDA • STEPHEN MADDEN • BEE MATTHEWS • DAN REES •

• COLIN WATSON • BENJAMIN MANEY • LOCAL CLUBS • PLUS MORE TBA! • SUPPORTED BY AXMINSTER TOOLS •

ASSISTING WITH ENQUIRIES AND HANDLING MONEY... CHESTNUT PRODUCTS • THE TINY TURNER • WOODART PRODUCTS •

• HOPE WOODTURNING • SHENTON WOODCRAFT • JS SAFETY • MARTIN PIDGEN TIMBER • TURNERS RETREAT • PLUS MORE TBA!

UNABLE TO TRAVEL? LIVESTREAM TICKETS WILL BE AVAILABLE, ALLOWING YOU TO WATCH LIVE AND FOR UP TO 6 MONTHS AFTERWARDS!

Spindle Turning on a Pole Lathe - continued



Above: Marking the position of beads from the template chair leg.

Below: Turning the beads.

Bottom: The matching chair leg turned by Phil during the demo.

Right:

Note the safety cord to prevent the piece flying across the room if the centres loose their grip.





Brought to you by:
HENRY TAYLOR
(TOOLS) LIMITED
EST. 1834

hamlet

CRAFT TOOLS

Find your local stockist at:
www.hamletcrafttools.co.uk/stockists

email: sales@hamletcrafttools.co.uk | tel: 0114 232 1338 | web: www.hamletcrafttools.co.uk

Spindle Turning on a Pole Lathe - continued

A Selection of Phil's Tools

These are carbon steel rather than our usual high-speed steel, as carbon steel take a sharper edge. They are mostly used with wet wood so they keep that edge long enough to turn a piece.

Skew chisel, slightly rounded chisel, flat chisel and draw knife.



Yandles

TIMBER & SAWMILL



SAWMILL

SELF-SELECT



BOWL BLANKS CUT TO SIZE
AND MUCH MORE!

Martock
Hurst
TA12 6JU
Yandles.co.uk
01935 822207

Open 7 Days
Free Parking

Teaching at Coombe Workshop

Ben Mullins 1st lesson,
taught by Paddy Byrne.
Oak bowl.



Jackie Simmonds 3rd lesson,
taught by Rob Sheehan.
Natural edge Beech bowl.

Items For Sale

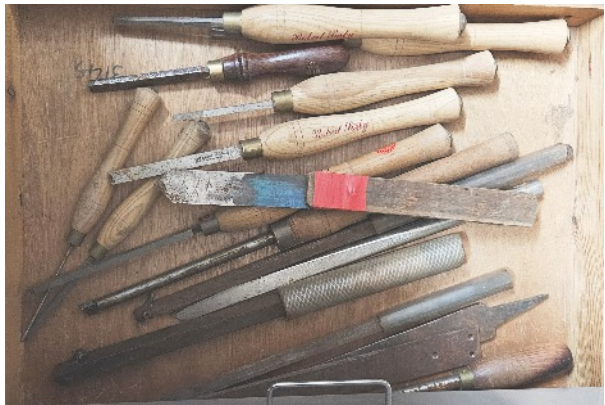
Disclaimer

The club is not responsible for any item appearing on these pages. The buyer and seller must make their own arrangements as to the condition, suitability, delivery, payment and price etc.

The following items are being sold by former Coombe Abbey club member John Roe johneroe@yahoo.co.uk
No prices, so make a sensible offer. Collection from Coventry.



Turning Tools



John Roe Equipment For Sale - continued



Bandsaw, Pilar drill, Belt and Disc Sander



John Roe Equipment For Sale - continued



Union Graduate lathe

Table Saw

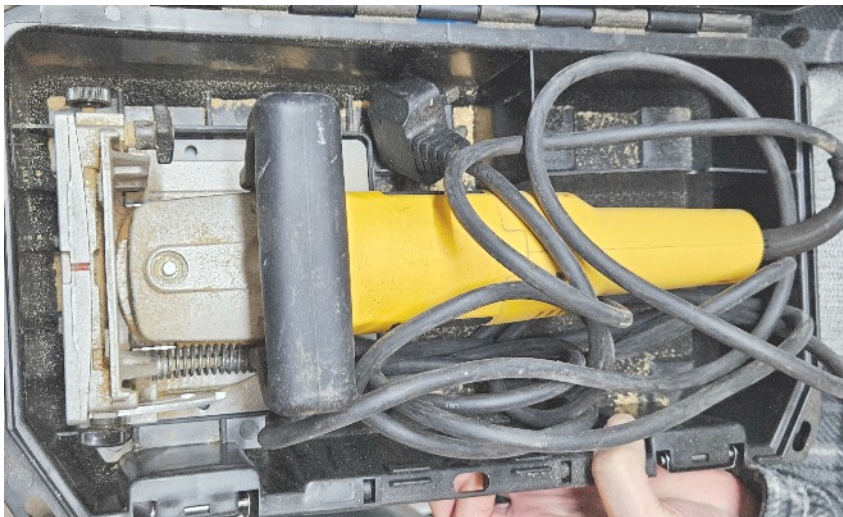


John Roe Equipment For Sale - continued

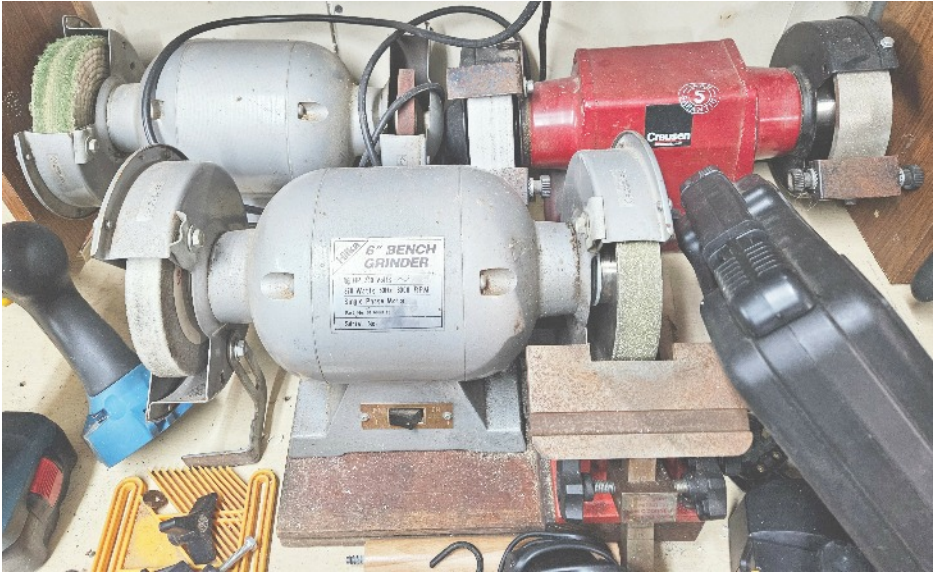


Carving gouges

DeWalt biscuit jointer



John Roe Equipment For Sale - continued



Various grinders

Wood



Equipment For Sale - continued

Chest of Drawers For Sale

Don Kildin has restored this chest of drawers. It is for sale £150 ono.
Contact Don if you are interested.



Equipment For Sale - continued

Former chairman of Hinckley Woodturning Club, Brian Hartwell, has a Diamond Scroll Saw for sale. £65 ono. Contact current chairman John Evans slimm100@hotmail.co.uk



Notices

New (Trainee) Members of the Club

Each new trainee will be offered the chance to attend two demonstrations Free-Of-Charge.

Tutors, please tell your student about the above offer.

- by order of the committee 26/1/25

Booking Training Sessions

Michael Archer is now handling all training session bookings.

Please phone him on 02476 448311.

Do not book a session without Michael's prior agreement.

Coombe Library

New books & DVDs have been added to the Coombe Library. See Peter Orange if you want to borrow a book. From time to time, Peter will bring the books to demonstrations.



BOND STREET TROPHIES LTD

01455 890007
www.bondstrophies.com

Specialists in Engraving, Trophies, Medals, Glassware, Corporate Awards,
Sports Equipment, Garment & Workwear Printing & Giftware.

The banner features a blue gradient background. On the left, there are three trophies: a gold soccer ball trophy, a silver medal with '1st', '2nd', and '3rd' places, and a gold star trophy. On the right, there are three soccer balls in different colors (orange, black, and white). The text is in a bold, white, sans-serif font.

Activities of other clubs in the Midlands area

As a matter of courtesy and to ensure that there is space available to accommodate members wishing to visit other clubs demo's, please use the contact telephone number where shown.

North Warwickshire & Hinckley Woodturners

Tuesday July 1 Turning Mice John Evans
Tuesday June 15 Sharpening Hands-On plus Second-Hand Stall

Contact Rob Sheehan 07905185122

Tudor Rose Woodturners

Thursday 10 July Bryan Brumfield
Thursday 24 July Emma Cooke Tiny Turner Demonstration

Contact Colin Smith 07939-004375 communications@tudor-rose-turners.co.uk

West Midlands Woodturners

Sunday 20th July Hands On – Bowls

Contact Chris Jones 07580 195561 crjones5691@gmail.com

West Northants Woodturners

Wednesday 2nd July Bryan Brumfield
Wednesday 16th July Gerald Hubbard

Contact Tom Donnely 01327 349093

Trent Valley Woodturners

Wednesday TBD

Contact Ian Ethell <https://www.trentvalleywoodturners.co.uk/contact/>

Heart of England Woodturners

Friday July 11th Club Open Evening

Contact Giles Dugmore (Chair) 0779 2424775

Coombe Woodturners Branded Items for Sale



COOMBE WOODTURNERS CLUB LOGO WEAR

Polo Shirt £16.50

Hoodies

Overhead £26.50

Zipper £28.50

Sweatshirts Crewneck £22.50

Fleece Jacket £24.50

Soft Shell Jacket £31.50

Soft Shell Bodywarmer £27.50

New Style Jacket £28.50

Please order and pay through Lee or Martin

Items take around 2-3 weeks lead time if not in stock

Thank you for supporting your Club

Workshop Notice

Coombe Abbey woodturners

As agreed at the AGM on the 4th January 2025

From 1st February 2025 we will be introducing a £1 entry fee into the workshop for all members.

This will include the use of the workshop & equipment Also to include tea & coffee you will also get entry into the 50/50 raffle each day you come into the workshop.

Clarification to the above notice:

The charge does NOT apply to tutors who are teaching a student, nor to committee members when attending a committee meeting.

This will not cover all costs but will go a some way to helping the club to run the workshop through the year and give members a chance of winning a little more money each month.

Thank you for your support

The Committee

Calendar of Events 2025

Month	Date	Day	Location	Event
Jan	4	Sat	W	AGM 10am Start
	18	Sat	C	Segment making. Graham Ball
Feb	21	Fri	S	Snail, Paddy Byrne
Mar	15	Sat	W	Paul Hannaby
Apr	6	Sun		Daffodil Festival
	25	Fri	S	Segmentation. Bill Nicholson
	18 - 21	Fri - Mon	C	Easter Festival of Crafts
May	09/ 10/	Fri/Sat		Woodworks At Daventry
	17	Sat	C	Hands-On Sharpening
July	12	Sat	W	Phil Steele Windsor Chair
Sept	6	Sat	W	Scroll Saw. Giovanni Deida
Nov	15	Sat	W	TBD
Dec	13	Sat	W	Christmas Party

Meeting Locations:

(W) Walsgrave Baptist Church, 10am - 4pm
Hinckley Road, Coventry, CV2 2EX.

(S) Shilton Village Hall, 6:30pm - 9pm
Wood Lane, Shilton, CV7 9JZ

(C) Coombe Abbey Workshop 10am - 12 noon, 1pm - 3pm
Brinklow Rd, Coventry CV3 2AB

Next Meeting

Windsor Chair with Phil Steele
Saturday July 12th. 10 am - 4 pm Walsgrave Baptist Church

Coming up

Saturday September 6th. Scroll Saw. Giovanni Deida. Walsgrave