

# **Coombe Abbey Woodturners NEWSLETTER**

**August**



**2025**

***This Month's Sponsor***



### DATA PROTECTION

Your personal details are held on a computer belonging to an officer of the Coombe Abbey Woodturners. Your details are purely for the use of the Club, and are not passed to any third party. If you object to your name, address and telephone number being held on a computer belonging to an officer of the Club, then please write to any member of the committee.

### HEALTH & SAFETY NOTICE

Woodturning can be dangerous! Always follow the manufacturers' instructions and safety advice when operating power tools. Never try the techniques shown at our demonstrations or in our Newsletter if you are unsure or the procedure does not feel safe. Always use the guarding and other safety equipment.

The Club takes reasonable care to operate and instruct in a safe manner and strongly recommends all members to follow the Club's Health and Safety rules and the guidance notes that the AWGB issue in their Revolutions magazine from time to time.

### Committee Members and Contacts

Chairman, Treasurer & Membership Secretary	Lee Cartwright
Vice Chairman	Giles Headley
Secretary & Library Custodian	Peter Orange
Events Secretary	Patrick Byrne
Newsletter & Web Site Editor	Rob Sheehan
	Graham Ball
	Graham Cashmore
	Rod Young
	Phil Steele
	Graham Hudspith
Training Coordinator	Michael Archer

Website: <https://www.coombeabbeywoodturners.org>

**Copy Deadline for the September 2025 issue of the Newsletter is:-  
Wednesday 24th August 2025**

**Please forward your News, Stories and Photographs to:-  
Robert Sheehan- Newsletter Editor -  
M: 07905 185122. E-mail: [robsheehan@virginmedia.com](mailto:robsheehan@virginmedia.com)**

© Copyright Coombe Abbey Woodturning Club 2025

The content of this newsletter must not be copied or reproduced without the written permission of the newsletter editor.

## In This Issue

Editor's Jottings	4
Don Kildin's Rolls Royce	5
One Line Philosopher	5
This month's Sponsor	6
Windsor Chair making	8
Society of Ornamental Turners	18
Items For Sale	31
Members' Work	32
Teaching at Coombe	34
Notices	36
Activities of Other Clubs	37
Coombe branded items	38
Workshop Charge Notice	39
Calendar of Events	40

## Advertisers

Record Power	7
Proops Brothers	9
TMS Volvo	11
Turners Retreat	13
Charnwood	15
Crown Hand Tools	17
Henry Taylor	19
Chestnut Products	21
Hamlet	23
Yandles	25
CSM Abrasives Plus	27

## Page

## From the Editor



In this issue, you will find some pictures from Phil Steele's Windsor Chair demonstration. Thanks to Lee for taking the pictures as I couldn't make the demo.

I have also included a brief description and pictures from my visit to The Society of Ornamental Turners meeting in Uxbridge, London.

Our next demonstration is on Saturday 6th September when Giovanni Deida will be giving us a Scroll Saw masterclass. If you have a dusty scroll saw in your workshop, this may be an opportunity to make some saleable items for the charity cabinet.

If you have any raffle tickets (sold or unsold), please return them to Gill as the raffle will be drawn on Monday 25th August bank holiday. We will also be opening the workshop as often as possible on Saturdays/Sundays leading up to the holiday, to sell more tickets.

The Chestnut Products Woodturning Weekender is being held at Steam, Swindon on Saturday 9th & Sunday 10th August. I'm going, are you?

Regards

*Phil*

## Editor's Jottings

Lee is very busy at the moment, so I'm filling in this month.

Our next demo is Giovanni Deida on Saturday 6th September. His scroll saw master class is always well received.

This Sunday, 3rd August, the club is having a stall at Town Thorns Nursing Home, Brinklow Road, Easenhall, Rugby, CV23 0JE. Set-up is from 9:30 and the event runs from 11:30 to 3:30. Volunteers please to help set up two gazebos and the pole lathe. Also to sell items and raffle tickets.

Chestnut Products are running their Woodturning Weekender in Swindon, on Saturday 9th and Sunday 10th August. Four professional demonstrators, trade stands and local clubs. I'm going, are you? See page 21.

Henry Taylor Tools are holding an open day on Sunday 31st August at their Sheffield works. I'm planning to go. Are you? See page 19.

Rob

## Places to Visit over the Summer Holidays

### Chatham Dockyard, Kent.

Lifeboats, ships and submarines to visit as well as the longest building in the country where they make rope.



## Don Kildin's Rolls Royce Model

A magnificent model of a Rolls Royce Silver Ghost. Wooden model with real leather seats. No Spirit of Ecstasy as Don said that was only introduced on later models.



*One Line Philosopher:*

*“Creative ideas do not spring from groups. They spring from individuals.”*

*Alfred Whitney Griswold 1957*

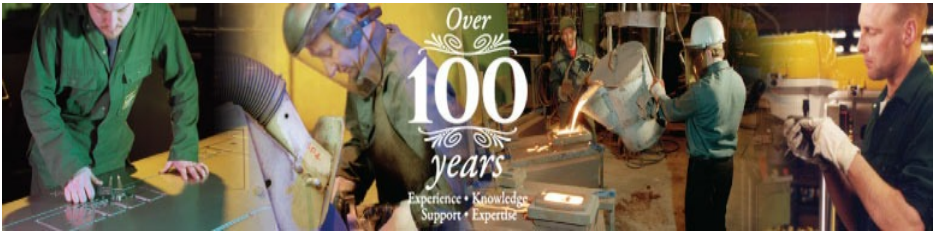
## **This Month's Newsletter Sponsor**

### **Record Power**

I am very pleased to welcome Record Power once again as a sponsor of this monthly Newsletter magazine. Over all the competition, we chose a Record Power Coronet Envoy lathe for the workshop upgrade. The quality, performance and package deal made Record Power the easy choice for the new workshop lathe. The workshop is also equipped with a Record Power band saw and several CamVac extractors.

*Editor*

### **Record Power (A Company Profile)**



Record Power has a long and impressive history. Established in Sheffield, the heart of the UK's steel industry, and stretching back over 100 years, we enjoy an enviable reputation for creating high quality tools through our many years of experience and unparalleled knowledge in manufacturing and design. Our policy of continual improvement and development has seen us remain at the forefront of tool manufacturing whilst also acquiring and developing such brands as Coronet of Derby, Burgess from Leicester, the industrial brand Startrite and CamVac.

The Record Power head office, manufacturing facility and distribution centre is still located in Sheffield and from this base we also design and manufacture a growing number of Record Power and CamVac products. Our commitment to British-made products has been recognised by our membership of the Made in Sheffield and Made in Britain organisations.

Record Power Ltd, Centenary House, 11 Midland Way,  
Barlborough Links, Derbyshire S43 4XA

Tel: 01246 571 020

For more information visit <https://www.recordpower.co.uk/>

**RECORD  
POWER**  
ESTABLISHED 1909®

## THE NEW STANDARD FOR WOODTURNING

We are proud to introduce our new range of turning tools, made in the UK at our in-house production facility. Designed in consultation with and tested rigorously by professional woodturners, they represent a new standard in quality and value.

When you buy a Record Power turning tool you are investing in many years of manufacturing expertise and knowledge from a brand with a rich heritage of woodturning specialisation.

"The new Record gouges have fantastic edge longevity and strong ergonomic handles. All you need in a quality woodturning gouge: stay sharp, feel good and turn well."

**Andrew Hall RPT**, Professional Woodturner and Tutor



### 3-Piece HSS Bowl Turning Tool Set

This set contains the three essential tools for bowl turning - 3/8" bowl gouge, 1/2" domed scraper and 3/16" parting tool.

103720



### 3-Piece HSS Spindle Turning Tool Set

This set contains the three essential tools for spindle turning - 1" spindle roughing gouge, 3/8" spindle gouge and 1/8" parting tool.

103710



Free online educational videos  
available at  
[recordpower.co.uk/turningtools](http://recordpower.co.uk/turningtools)



View our full range at [recordpower.co.uk](http://recordpower.co.uk) | Bowl Gouges | Spindle Gouges | Spindle Roughing Gouges | Skew Chisels | Scrapers | Parting Tools

All prices include VAT, EX80.

**MADE IN  
BRITAIN**

**MADE IN  
SHEFFIELD**

Over  
**100**  
years  
Experience • Knowledge  
Support • Expertise

Incorporating some of the most famous  
brands in woodworking, Record Power's  
roots stretch back over 100 years.

**RECORD POWER**

**CORONET** **STARTFIRE**  
**CanVac** **BLISS**

For more details visit  
[recordpower.co.uk](http://recordpower.co.uk) or  
contact your local stockist

**RECORD POWER**  
ESTABLISHED 1909®

# **Windsor Chair Making**

## **Phil Steele 12/7/25**

Pictures by Lee Cartwright

A Windsor chair is a chair built with a solid wooden seat into which the chair back and legs are tenoned into drilled holes. Other styles of chairs have the back legs and back uprights continuous. The seats of Windsor chairs are



often carved into a shallow dish shape for comfort. Traditionally, the legs, stretchers, and uprights (or spindles) were usually turned on a pole lathe. Spindles may also be carved, using drawknives and spokeshaves. The back and sometimes the arm pieces are formed from steam bent pieces of wood.

Historically, the manufacture of Windsor chairs was in Buckinghamshire, with High Wycombe becoming the centre of production.

Traditionally, three types of craftsmen were involved in the construction of a Windsor chair. The chair bodger, an itinerant craftsman who worked in the woods and made the legs and stretchers, on a pole lathe. The benchman who worked in a small town or village workshop and would produce the seats, backsplats and other sawn parts. Finally, the framer would take the components produced by the bodger and the benchman and would assemble and finish the chair.

Phil ready to start turning a chair leg on his home-made pole lathe. Wet, straight-grained timber (e.g. Ash) is used after being roughed to size using an axe and draw knife.



**PROOPS BROTHERS**

ENGLAND • EST 1946

.COM

**70** years of  
tooling excellence

## Push sticks



## 3 Types of Push-Sticks J8088



**A** Standard for pushing sheets and blocks



**B** Spikes to grip logs



The stepped edge can be trimmed off for thinner sheets

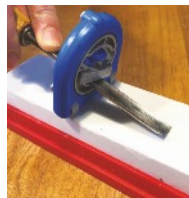


**C** Rounded for rounded edge support



## Sharpening jigs

Gouge sharpening Jig Honing Guide for arc shaped blades W8065



## Sanding



10, 20 & 40mm  
Finger Sanders  
W3291, W3292 &  
W8016

25mm File  
Sander W3201

Handy Sander  
W3293



Standard  
Honing  
Guide  
X1035

Oil  
Stone  
Box  
W3330

## Calipers & Dividers



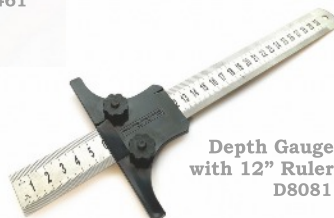
Inside Outside with  
measurements  
M7176 & W3509



W3461



W3460



Depth Gauge  
with 12" Ruler  
D8081

View our website for 1000's of woodworking, craft and hobby tools

[proopsbrothers.com](http://proopsbrothers.com)

tel: 0116 2403400

## Windsor Chair making - continued

Drilling the legs for the stretchers. Having drilled the holes, Phil measures the length of the stretcher.



Turning a stretcher on a powered lathe.



Fitting the legs and stretchers into the angled seat holes.



V O L V O

# Let **TMS** look after your Volvo

SALES // SERVICE  
PARTS // ACCESSORIES

With over 300 years combined experience of working with Volvo, nobody knows your Volvo like **TMS**.

With award-winning levels of customer service and state-of-the-art facilities at Trinity Marina, what ever your Volvo requirements, the **TMS** team can deliver.



QUALITY • CARE • PERSONAL SERVICE



Coventry: TEL. **02476 303132**

Hinckley: TEL. **01455 632478**

Leicester: TEL. **0116 2758800**

[www.tmsmotorgroup.co.uk/volvo](http://www.tmsmotorgroup.co.uk/volvo)

## Windsor Chair making - continued



**Above:** the assembled seat, legs and stretchers.

**Below:** Chair with steam-bent arms/back and backrest spindles.



# Supporting makers and small businesses

Join our Community Showcase and have your work featured on our website and social media pages; no fees apply.

- We share a monthly theme
- You submit a relevant piece of work
- Send us links to your online shop and socials
- We'll post it all on our website for free!

Increase your online presence and potentially boost sales!



Scan me!

**Turners Retreat**  
THE WOODWORKERS SOURCE

[www.turners-retreat.co.uk](http://www.turners-retreat.co.uk)



Works submitted must be your own and must be made using at least one product purchased from Turners Retreat.

## Windsor Chair making - continued

Drilling the arm rest to fit the support spindles.



Curved draw knife.



Spokeshave from above and below.



## Introducing our new Wood Turning Chisel Sets

We're excited to announce we now have in stock our sets of Quality Woodturning Chisels.

Check out these superb sets, whether you are after a traditional set, or looking for something updated with the latest technology, we are sure you will be happy with whichever you choose

### TCSET4S

#### Carbide Tipped Wood Turning Tool, 4 Piece Set

**£119.00**

A set of 4 carbide scraper turning tools, incorporating the newest technology in woodturning: Replaceable carbide cutting tips.

4 Piece set includes:

- Round Carbide Cutter - Spindle Cove & Bowl Interior
- Square Carbide Cutter - Flat Straight Edges
- Radius Carbide Cutter - Spindle Bead & Bowl Exterior
- Triangle Carbide Cutter - Details & Decorative Work

### TCSET3H

#### Carbide Turning Tools For Hollowing, 3 Piece Set

**£139.00**

A set of 3 carbide scraper turning tools, incorporating the newest technology in woodturning:

Replaceable carbide cutting tips.

3 Piece set includes:

- Carbide Tipped - Straight
- Carbide Tipped - Shallow Curve
- Carbide Tipped - Full Curve

### M2CSET6

#### Cryo Hardened M2 HSS Woodturning Chisel Set

**£219.00**

Premium quality set of 6 woodturning chisels for spindle and bowl turning.

6 Piece set includes:

- 28mm (1") Roughing Gouge
- 19mm (3/4") Flat Skew Chisel
- 12mm (1/2") Spindle Gouge
- 12mm (1/2") Bowl Gouge
- 4mm (3/16") Diamond Parting Tool
- 19mm (3/4") Round Nose Scraper

## **Windsor Chair making - continued**

The finished Child-size Windsor Chair



# INTRODUCING THE NEW REVOLUTION

The 'revolution' is a completely new hollowing system from the world leaders in fine turning tools. From its beautifully weighted handle to its cryogenically treated cutting tips the 'revolution' is designed to be the finest hollowing tool on the market.

The modular articulated design allows the woodturner the freedom and flexibility to configure the tool for any situation. From straight vases to heavily undercut hollow forms the 'revolution' has it covered.

At the heart of the 'revolution' is the new fully depth adjustable 'super ring' the revolutionary design of the 'super ring' ensures clean efficient wood removal at all times with 5 different cutting tips and modular articulation design the revolution is a must have tool for all woodturners.



- Supplied with 5 different cutting tips for unrivalled flexibility.
- Clever modular design allows for many different configurations.
- All collars and collars beautifully machined from solid 'marine grade' brass billet.
- High performance cryogenically treated cutting tips for vastly improved wear resistance.
- New adjustable 'Super ring' allows ultra efficient wood removal without clogging.
- Slim-line articulated tip design for unrestricted access to those hard to reach cuts.
- Expandable.
- Hard made in Sheffield, England.



Tel. 0114 261 2300  
Fax. 0114 261 2305

Web. [www.crownhandtools.ltd.uk](http://www.crownhandtools.ltd.uk)  
Email. [info@crownhandtools.ltd.uk](mailto:info@crownhandtools.ltd.uk)



## Society of Ornamental Turners

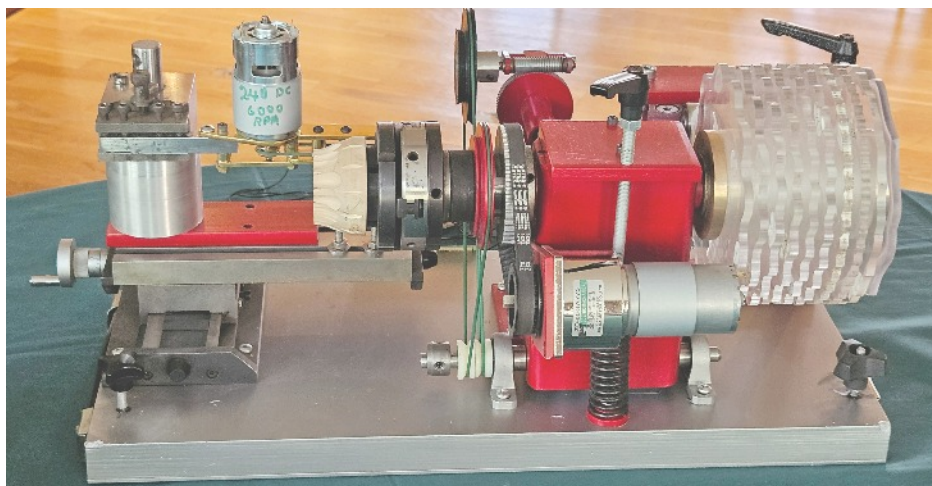
By Rob Sheehan 12/7/2025



Back in May, I joined the society of Ornamental Turners (SOT) after seeing them and SOT/club member Malcolm Thorpe at Woodworks at Daventry. I attended my first meeting on Saturday 12th. They meet in Uxbridge, London as well as holding Zoom

meetings. The meeting started after a very nice buffet lunch (cost £8). After the usual notices etc., Gerry Marlow was introduced. He gave a talk on his home-built Rose Engine. He and other members of the SOT had also brought along pieces of their work. After the demo (& another tea break), they held an auction of about 160 lots. Most went for a few pounds but a set of Holtzapffel cutters sold for £400. I bought seven lots for a total of £50.

This is another of Gerry Marlow's Rose Engines (RE). In the centre, you can see the workpiece held in a chuck. The chuck is driven by a stepper motor at the front of the head stock. The head stock can rock left to right driven by the Roses seen on the right hand side. The tool rest on the left hand side can move in an X/Y direction. Another motor drives a tiny cutter via a drive belt.



# HENRY TAYLOR

(TOOLS) LIMITED

EST. 1834



hamlet  
CRAFT TOOLS  
Made in England UK

## OPEN DAY

Sunday 31st August 2025  
10am - 3:30pm

- Acorn, Diamic & Hamlet tools retail stands
- Woodturning & wood carving demonstrations
- Visiting woodturning & wood carving clubs
- Timber sale from Albion Timber
- Raffle
- Drinks and refreshments
- Special discounts on the day

**Peacock Trading Estate,  
Livesey Street, Sheffield S6 2BL  
(Behind Hillsborough Dog Track)**

Free entry and parking

Raising money  
for Andy's  
Man Club &  
Men in Sheds

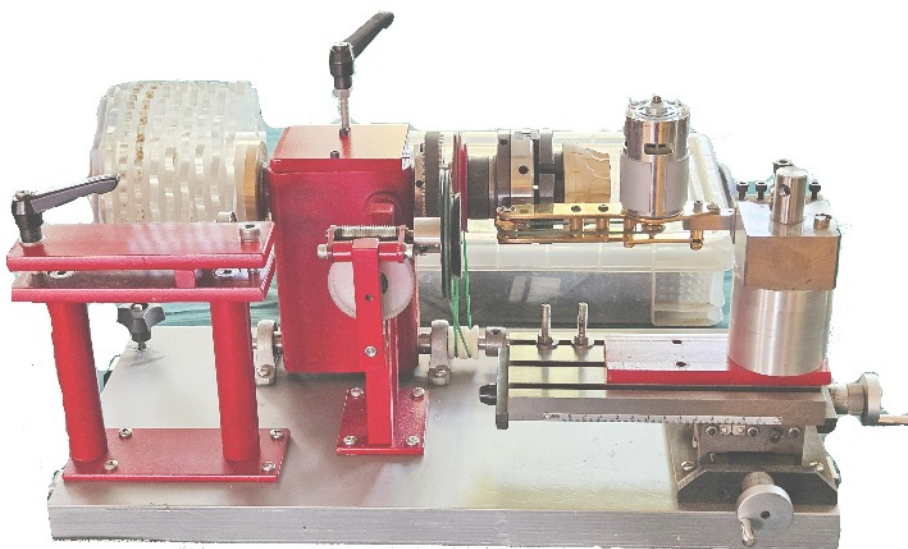


Goody bag  
for first 10  
customers



25% off  
RRP

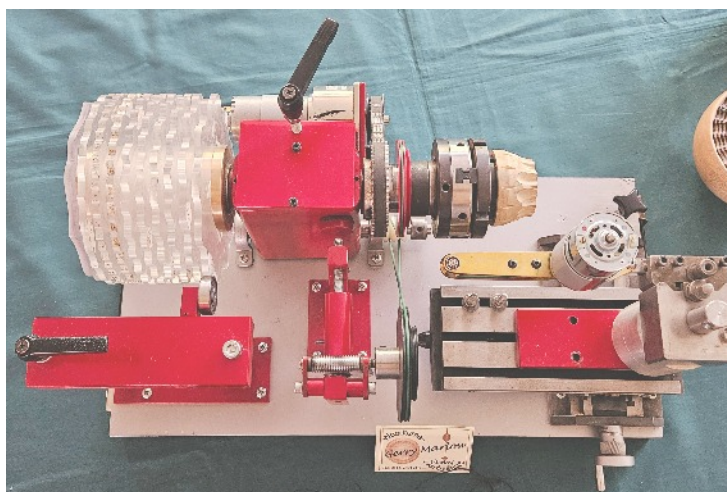
Please note the factory will not be open for tours

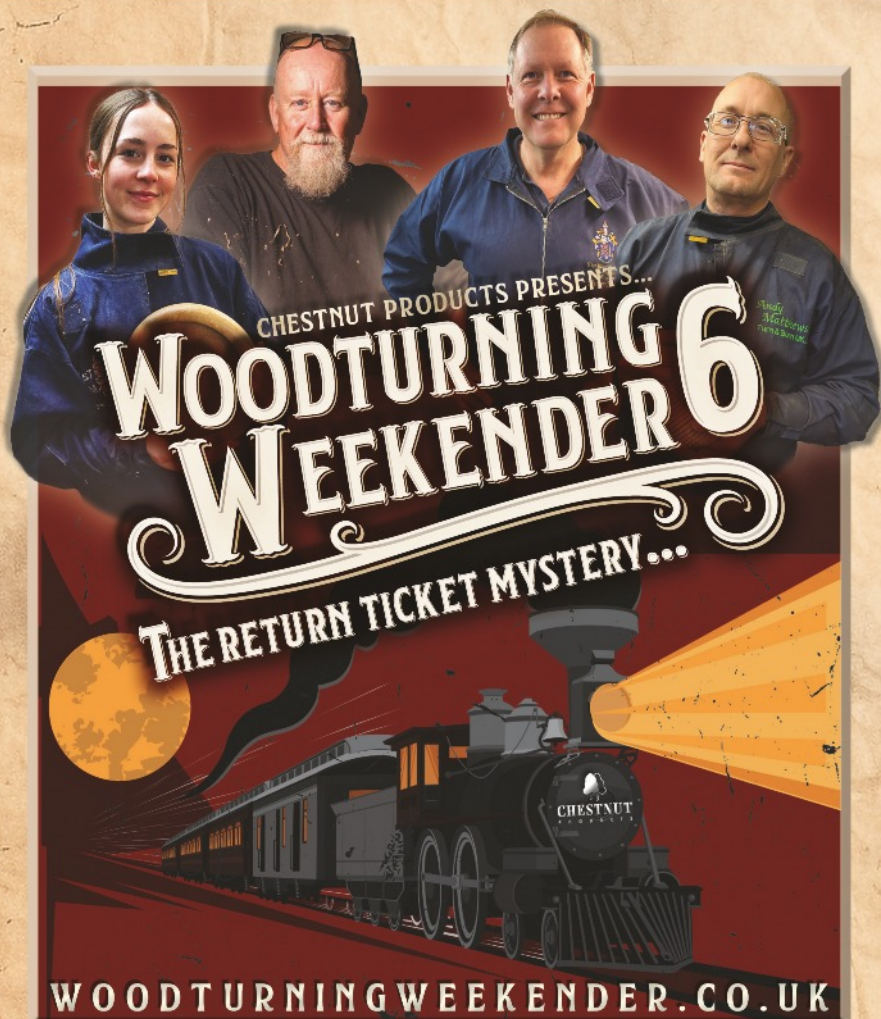


Rear view of the Rose Engine. On the left hand side is a cam that runs against the selected Rose, and rocks the head stock. Selecting a different Rose, allows a different pattern to be cut. In the middle, is a self advance mechanism. Each rotation of the head stock also advances the cutter into the workpiece.

This RE lacks one feature found on Gerry's other RE, a pumping action. This moves the head stock forward and backward (as well as left and right). The pumping action is also driven by a Rose and enables 3D shapes to be created.

Top view showing the motor driven cutter holder (right middle) and the self advance (bottom middle).





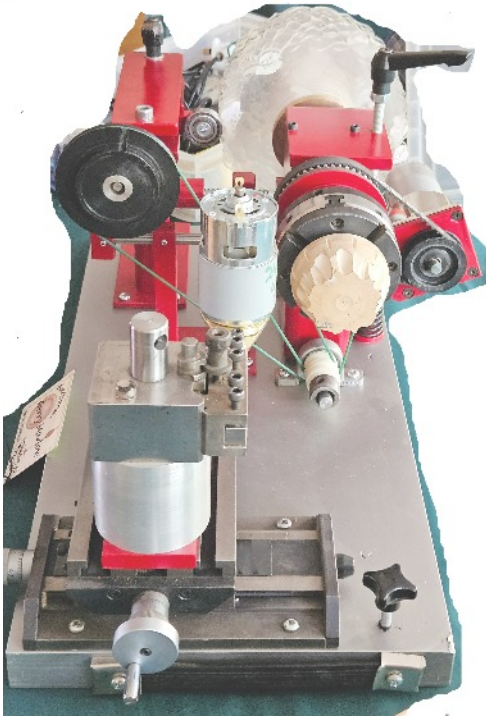
9-10 AUGUST 2025 • STEAM, FIRE FLY AVENUE, SWINDON, SN2 2EY

THE MAIN SUSPECTS... KATIE ARMSTRONG • ANDY FORTUNE • SIMON HOPE • ANDY MATTHEWS

• BE ON THE LOOKOUT FOR... AWGB • ALAN CRAMER • GIANNI DEIDDA • STEPHEN MADDEN • BEE MATTHEWS • DAN REES •  
• COLIN WATSON • BENJAMIN MANEY • LOCAL CLUBS • PLUS MORE TBA! • SUPPORTED BY AXMINSTER TOOLS •

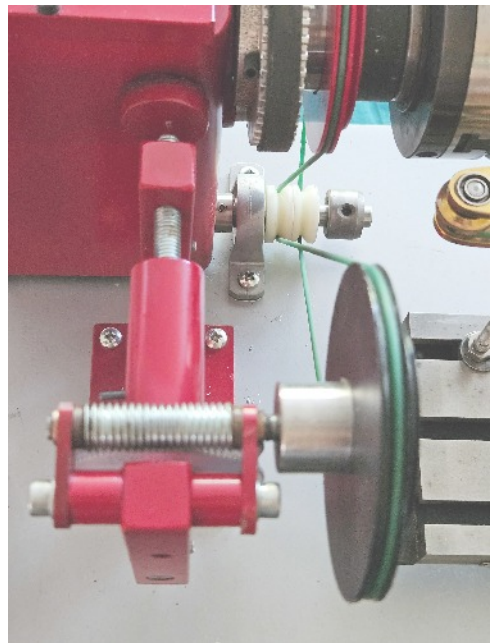
ASSISTING WITH ENQUIRIES AND HANDLING MONEY... CHESTNUT PRODUCTS • THE TINY TURNER • WOODART PRODUCTS •  
• HOPE WOODTURNING • SHENTON WOODCRAFT • JS SAFETY • MARTIN PIDGEN TIMBER • TURNERS RETREAT • PLUS MORE TBA!

UNABLE TO TRAVEL? LIVESTREAM TICKETS WILL BE AVAILABLE, ALLOWING YOU TO WATCH LIVE AND FOR UP TO 6 MONTHS AFTERWARDS!



X-Y cross-slide for moving the cutting frame into position.  
Self advance is driven via pulleys and drive belts from the main chuck motor.

Self advance mechanism for automatically moving the cutter into the workpiece as the piece rotates.





Brought to you by:  
**HENRY TAYLOR**  
(TOOLS) LIMITED  
EST. 1834

# hamlet

## CRAFT TOOLS

*Find your local stockist at:*  
***[www.hamletcrafttools.co.uk/stockists](http://www.hamletcrafttools.co.uk/stockists)***

email: [sales@hamletcrafttools.co.uk](mailto:sales@hamletcrafttools.co.uk) | tel: 0114 232 1338 | web: [www.hamletcrafttools.co.uk](http://www.hamletcrafttools.co.uk)



The Roses and the cam bearing that rocks the head stock left and right. A number of Roses are mounted together so that a simple movement of the cam can change the pattern to be cut. Very often, a pattern row will be repeated with an offset to the previous row. Rather than manually rotate the Rose to create the offset, Gerry mounts two identical Roses, one offset to the other.

# Yandles

## TIMBER & SAWMILL



**SAWMILL**

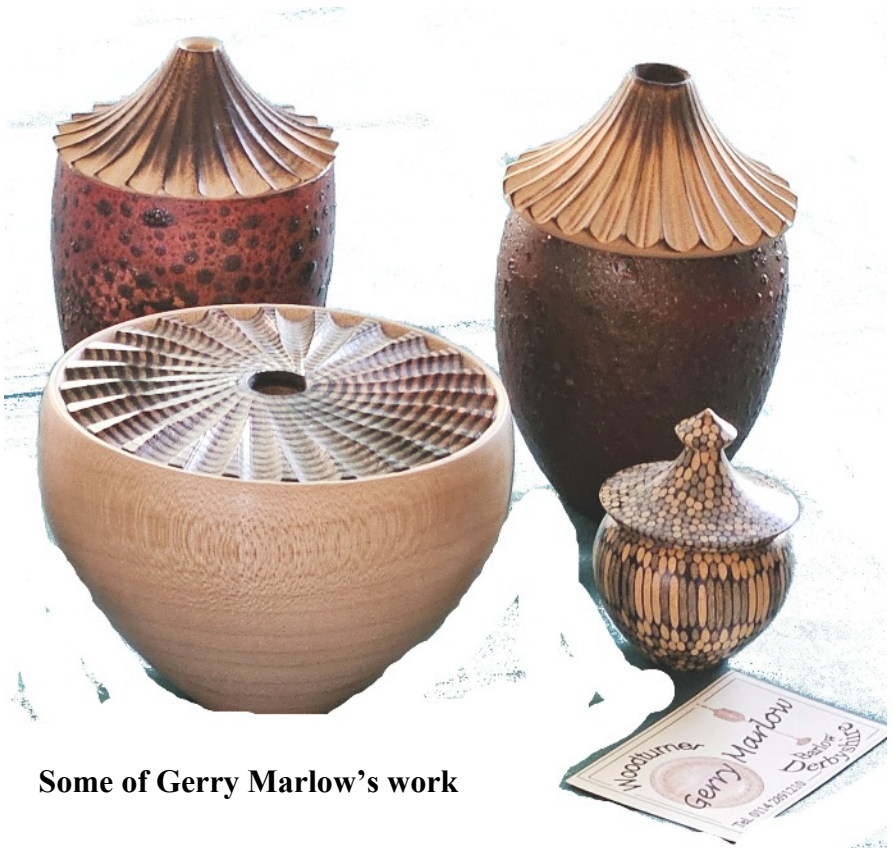
**SELF-SELECT**



**BOWL BLANKS CUT TO SIZE**  
**AND MUCH MORE!**

Martock  
Hurst  
TA12 6JU  
**Yandles.co.uk**  
01935 822207

**Open 7 Days**  
**Free Parking**



**Some of Gerry Marlow's work**



Sanding needs as much care as construction and design. As much care needs to be taken in sanding as in the construction of a piece of work. A few minutes poor sanding technique can irreversibly destroy great craftsmanship and many hours work.



## THE ULTIMATE ABRASIVE! RB406 J.FLEX. TRIAL PACK

1M OF CLOTHLINEACH OF THE FOLLOWING GRITS

P80, P120, P240 AND P320 **£14.75** INC VAT ORDER CODE **12 806 RB406**

J.Flex is the best abrasive for every workshop. It's ideal for turning, woodworking and metal working. The distinctive blue abrasive with the yellow backing is the softest and most flexible abrasive we have ever discovered. The ultimate abrasive for all kinds of woodworking, especially sanding in acute areas. This cloth can be twisted and folded without grain dis-adhesion. Rolls are 100mm wide. **ALSO AVAILABLE BY THE METRE.**



## VELCRO-BACKED ROLLS.

TRIAL PACK 1M OF P100, P150, P240 AND P320 PLUS A SAMPLE STRIP OF VELCRO REPLACEMENT WITH PEEL OFF SELF ADHESIVE BACKING. **£14.75** INC VAT ORDER CODE 13159 ALSO AVAILABLE BY THE METRE. PLUS- IT PAYS TO BUY BIG. WITH OUR BULK RATE PRICES YOU'LL SAVE MONEY ON THE GRITS YOU USE MOST.

Cut off any length to suit your own sanding application. Every workshop should have at least two or three grades of this to hand. Especially manufactured by Harnes abrasives for us. Ideal for those shop made sanding devices which you can now make to your own specification. Hook and loop, or velcro attachment does away with the unpleasant task of clamping the paper to the machine allows rapid changing of the sheet and encourages the use of more grits extending the finish quality and life of the abrasive. Rolls are 115mm wide.

For your free catalogue call 01636 688888 or e-mail [sales@abrasivesplus.com](mailto:sales@abrasivesplus.com) or visit our on-line shop at [www.abrasivesplus.com](http://www.abrasivesplus.com) where all our products are featured and it's free carriage!

**CSM ABRASIVES PLUS UNIT 2 NORTHERN ROAD, NEWARK, NOTTINGHAMSHIRE, NG24 2EH**  
TEL - 01636 688888 FAX - 01636 688889 [sales@abrasivesplus.com](mailto:sales@abrasivesplus.com) [www.abrasivesplus.com](http://www.abrasivesplus.com)

## Engine Turning (a form of OT) on Silver done by John Moorhouse



### Examples of Engine Turning on Silver

Some with fired enamel

Some projects showing work in progress

John Moorhouse



More items on display at the meeting.





**Above right & left:**  
Selection of Bill Jones' tools.

**Right & bottom:**  
Selection of auction items.



## Items For Sale

### Disclaimer

The club is not responsible for any item appearing on these pages. The buyer and seller must make their own arrangements as to the condition, suitability, delivery, payment and price etc.

### Diamond Scroll Saw for sale

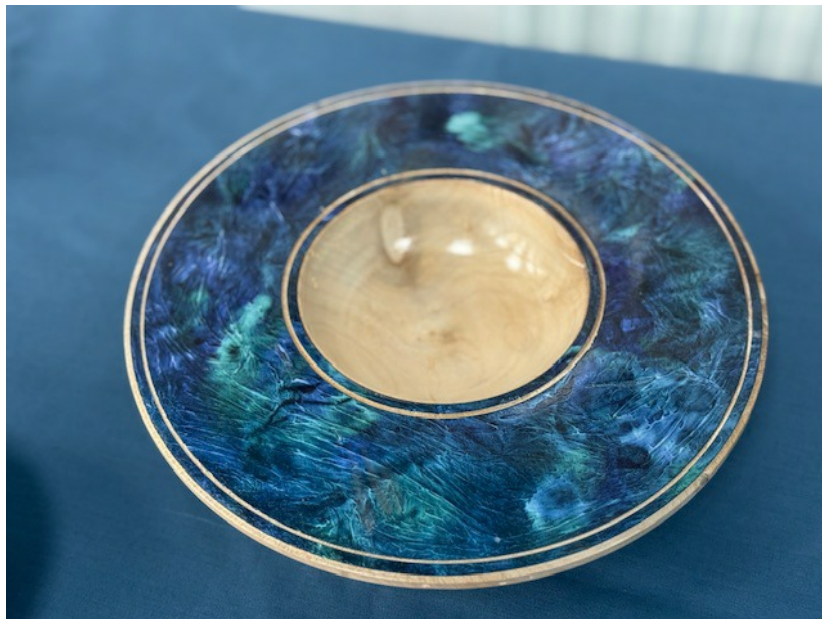
Former Chairman of Hinckley Woodturning Club, Brian Hartwell, has a Diamond Scroll Saw for sale. Price £65.



## Members' Work on Display at Phil's Demo



## Members' Work on Display at Phil's Demo



## Workshop Teaching

Dave Hyde recently came in for his third lesson and joined us as a club member. Dave brought in his own bowl blank, with instructions from his wife to make a piece having a turned-in rim. We used regular bowl gouges, Simon Hope hollowing tools, and scrapers to produce a nicely proportioned bowl. It was reversed and turned to remove the mounting tenon, leaving a noggin to carve/sand away by hand. Having established that the bowl would be kept for decoration and not used for food, the piece was finished with sanding sealer and WoodWax 22.

Cheers

Giles



## Workshop Teaching

Dexter turned an Ash bowl.  
Tutor Rob Sheehan.



Glen turned a Sapele bowl.  
Tutor Lee Cartwright

## Notices

### New (Trainee) Members of the Club

Each new trainee will be offered the chance to attend two demonstrations Free-Of-Charge.

Tutors, please tell your student about the above offer.

- by order of the committee 26/1/25

### Booking Training Sessions

**Michael Archer** is now handling all training session bookings.

Please phone him on 02476 448311.

Do not book a session without Michael's prior agreement.

### Coombe Library

New books & DVDs have been added to the Coombe Library. See Peter Orange if you want to borrow a book. From time to time, Peter will bring the books to demonstrations.



**BOND STREET TROPHIES LTD**

**01455 890007**  
**[www.bondstrophies.com](http://www.bondstrophies.com)**

**Specialists in Engraving, Trophies, Medals, Glassware, Corporate Awards,  
Sports Equipment, Garment & Workwear Printing & Giftware.**

## Activities of other clubs in the Midlands area

As a matter of courtesy and to ensure that there is space available to accommodate members wishing to visit other clubs demo's, please use the contact telephone number where shown.

### North Warwickshire & Hinckley Woodturners

Tuesday August 5      Hands-On Mice  
Tuesday August 19      Demo      Ian Ethel

Contact Rob Sheehan      07905185122

---

### Tudor Rose Woodturners

Thursday 14 August      Will Stewart  
Thursday 28 August      Rob Till Demonstration

Contact Colin Smith      07939-004375 [communications@tudor-rose-turners.co.uk](mailto:communications@tudor-rose-turners.co.uk)

---

### West Midlands Woodturners

Sunday 17th August      Demonstration – Stephen Kearvell

Contact      Chris Jones 07580 195561 [crjones5691@gmail.com](mailto:crjones5691@gmail.com)

---

### West Northants Woodturners

Wednesday 6th August      Roger Gilbert  
Wednesday 20th August      Hands-On

Contact      Tom Donnelly      01327 349093

---

### Trent Valley Woodturners

Wednesday TBD

Contact      Ian Ethell <https://www.trentvalleywoodturners.co.uk/contact/>

---

### Heart of England Woodturners

Friday August 8th      Mick Hanbury Demo

Contact      Giles Dugmore (Chair) 0779 2424775

## **Coombe Woodturners Branded Items for Sale**



### **COOMBE WOODTURNERS CLUB LOGO WEAR**

**Polo Shirt £16.50**

#### **Hoodies**

**Overhead £26.50**

**Zipper £28.50**

**Sweatshirts Crewneck £22.50**

**Fleece Jacket £24.50**

**Soft Shell Jacket £31.50**

**Soft Shell Bodywarmer £27.50**

**New Style Jacket £28.50**

**Please order and pay through Lee or Martin**

**Items take around 2-3 weeks lead time if not in stock**

**Thank you for supporting your Club**

## **Workshop Notice**

### **Coombe Abbey woodturners**

As agreed at the AGM on the 4<sup>th</sup> January 2025

From 1<sup>st</sup> February 2025 we will be introducing a £1 entry fee into the workshop for all members.

This will include the use of the workshop & equipment Also to include tea & coffee you will also get entry into the 50/50 raffle each day you come into the workshop.

### **Clarification to the above notice:**

The charge does NOT apply to tutors who are teaching a student, nor to committee members when attending a committee meeting.

This will not cover all costs but will go a some way to helping the club to run the workshop through the year and give members a chance of winning a little more money each month.

Thank you for your support

The Committee

## Calendar of Events 2025

Month	Date	Day	Location	Event
Jan	4	Sat	W	AGM 10am Start
	18	Sat	C	Segment making. Graham Ball
Feb	21	Fri	S	Snail, Paddy Byrne
Mar	15	Sat	W	Paul Hannaby
Apr	6	Sun		Daffodil Festival
	25	Fri	S	Segmentation. Bill Nicholson
	18 - 21	Fri - Mon	C	Easter Festival of Crafts
May	09/ 10/	Fri/Sat		Woodworks At Daventry
	17	Sat	C	Hands-On Sharpening
July	12	Sat	W	Phil Steele Windsor Chair
Sept	6	Sat	W	Scroll Saw. Giovanni Deida
Nov	15	Sat	W	TBD
Dec	13	Sat	W	Christmas Party

### Meeting Locations:

**(W)** Walsgrave Baptist Church, 10am - 4pm  
Hinckley Road, Coventry, CV2 2EX.

**(S)** Shilton Village Hall, 6:30pm - 9pm  
Wood Lane, Shilton, CV7 9JZ

**(C)** Coombe Abbey Workshop 10am - 12 noon, 1pm - 3pm  
Brinklow Rd, Coventry CV3 2AB

### Next Meeting

Scroll Saw Masterclass with Giovanni Deida  
Saturday September 6th. 10 am - 4 pm Walsgrave Baptist Church

Coming up  
TBD